

Installation Instructions

Eibach Springs, Inc. • 264 Mariah Circle • Corona, California 92879-1751 • USA • Tech Support 800-222-8811 Ext 114



Anti-Roll-Kit # 6393.312

2009-2010 Nisan 370Z, Coupe, 3.7L V6

2010 Nisan 370Z. Convertible. 3.7L V6

Kit Contents	Description	Part Number	Qty
	Rear Bar	6393.320R	1
	Anti-Roll Hardware Kit	6393.312HK	1
	Rear Bushing	UB0239	2
	Information Kit	EPAK	1
	Instructions	6393.312INST	1

NOTES: Read All Instructions Before Beginning Installation

- **Only qualified mechanics experienced in the installation and removal of suspension components should perform this installation.**
- **Use** of a hoist and screw jack is highly recommended and will substantially reduce installation time.
- **Installation time:** Is approximate .5 hour with the use of a hoist.
- **Never work on or under a vehicle unless it is properly supported.**
- **Tire Rotation:** In order to increase the life of your tires, it is recommended to rotate your tires every 3,000 miles.

FACTORY REAR BAR REMOVAL

1. Raise the vehicle up and support it with safety stands, then, remove the rear wheels.



Photo 1

2. Remove the four bolts (2 per side) that secure the braces to the bottom of the car. (See Photo 1)



Photo 2

3. Loosen the two bolts at back section of the braces, but do not remove, loosen just enough to let the front of the braces hang down. (See Photo 2)



Photo 3

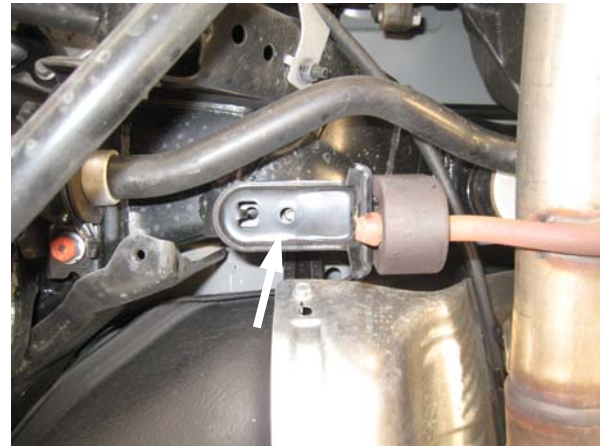


Photo 6



Photo 4

5. Remove the two nuts (one per side) that secure the forward muffler hanger brackets. **(See Photo 6)**
6. You can now lower the muffler down just enough to aid in the removal of the rear OE anti roll bar.

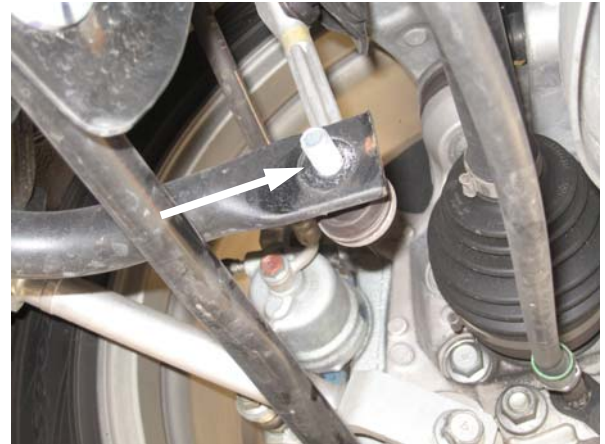


Photo 7



Photo 5

7. Remove the nuts that secure the rear OE end link assembly to both ends of the factory bar. **Note: The end links will be re-used to install the new Eibach rear bar. (See Photo 7)**

4. Using a screw jack support the rear muffler/exhaust, then, remove the 6 bolts, 3 per side, that secure the rear muffler to the underside of the car, then, remove the front bolt that secures the rubber grommet to the hanger. **(See Photos 3, 4 & 5)**

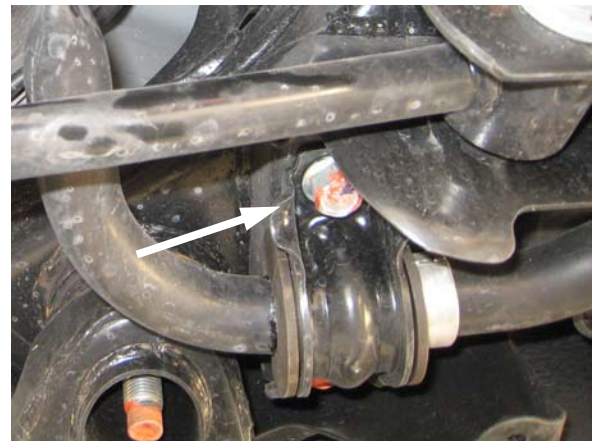


Photo 8

8. Loosen and remove the bolts that secure the OE bushing brackets to the subframe. **(See Photo 8)**

9. You can now safely remove the rear bar from the vehicle. **Note: Be sure to note the orientation of the OE bar, as the new Eibach bar will be installed in the same orientation.**

EIBACH REAR BAR INSTALLATION

1. Apply some poly lubricant to the inside of the new rear bushings.
2. Install the new Eibach bushings onto the Eibach bar.

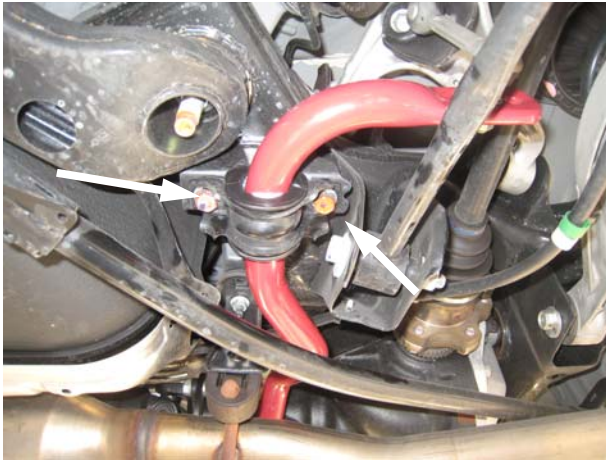


Photo 9

3. Install the Eibach bar into the vehicle and secure the bar using the OE bushing brackets and bolts. (See Photo 9)



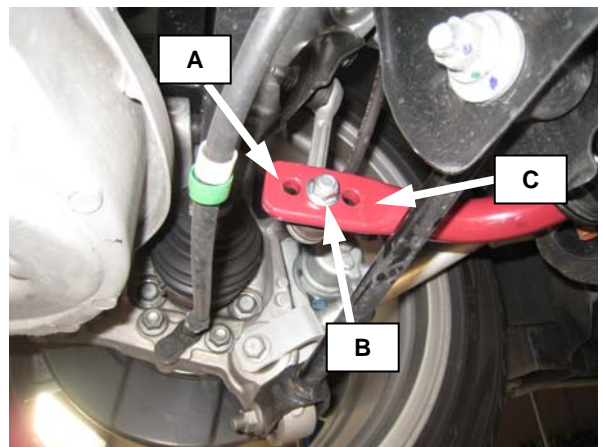
Photo 10

4. Secure the end links to the end of the bar using the OE hardware. (See Photo 10)
5. You can now raise the exhaust system back into place and secure it to the OE hanger mounts using the OE hardware, then, secure the braces using the OE hardware as well.



Photo 11

6. Double check to make sure everything is properly positioned, then, tighten all hardware.



Tuning Rear Bar.

- a) Softest setting.
 - Reduces over-steer
 - Use in rain or on slick roads.
 - Use on rough or bumpy tracks.
 - Increases comfort.
- b) Mid setting.
 - Tuning out under or oversteer
 - For normal driving conditions
 - Dry street driving
- c) Firmest setting.
 - Reduces under-steer
 - Use on dry roads and tracks.
 - Use on smooth roads and tracks.
 - Do not use on wet or slick roads.