

# Installation Instructions

Eibach Inc .264 Mariah Circle Corona, CA 92879 USA Tech Support 800-507-2338 ext. 114



## END LINK KIT #AK41-209-019-01-02

### Kit Contents

Description	Part Number	Quantity
End Link Assembly	UEL24010303	2

### Notes

#### Read all instructions before beginning installation

Only qualified mechanics experienced in the installation and removal of suspension components should perform this installation.

Use of a hoist and screw jack is highly recommended and will substantially reduce installation time.

Never work on or under a vehicle unless it is properly supported.

### Installation



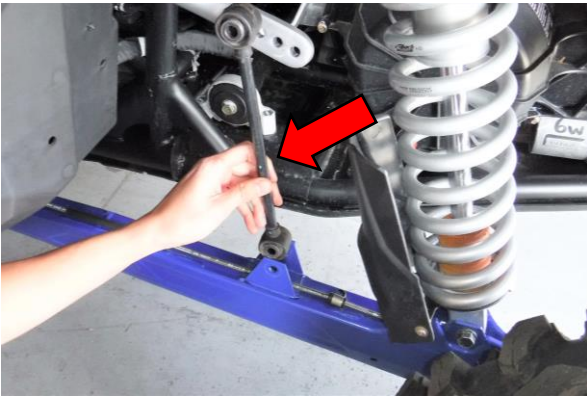
Step 1

Step 1. Loosen and remove the hardware that secures the end link to the end of the anti-roll bar.



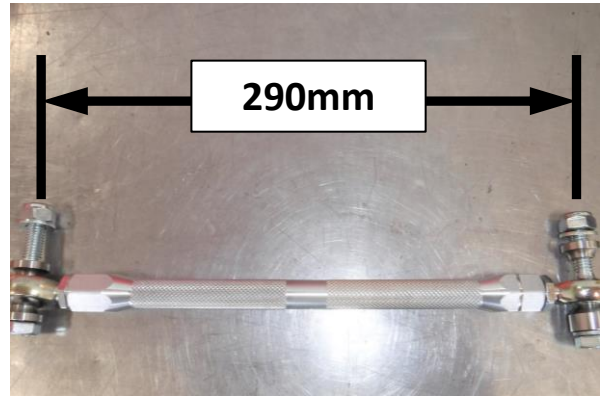
Step 2

Step 2. Loosen and remove the hardware that secures the end link to the trailing arm.



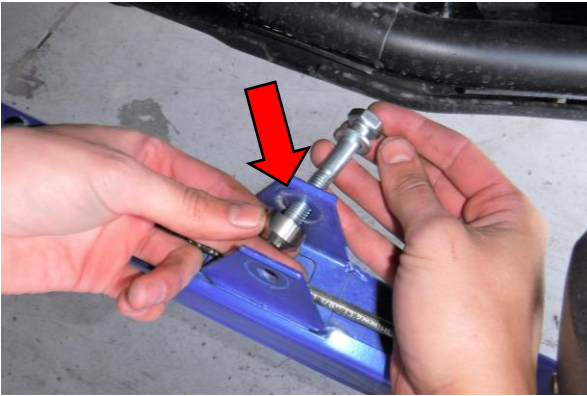
Step 3

Step 3. Remove the factory end link as shown.



Step 4

Step 4. Adjust the Eibach end links to **290mm** as shown.



Step 5

Step 5. Slide the provided bolt into the trailing arm and slide the inner mis-alignment spacer onto the end of the bolt as shown.



Step 6

Step 6. Install the end link and slide the bolt into the end link as shown.



Step 7

Step 7. Install the outer mis-alignment spacer onto the end of the bolt



Step 8

Step 8. Slide the bolt through the trailing arm and secure it with the provided washer and nylock nut.





Step 9

Step 9. Tighten the end link to the trailing arm as shown.



Step 10

Step 10. Attach the end link to the anti-roll bar as shown.



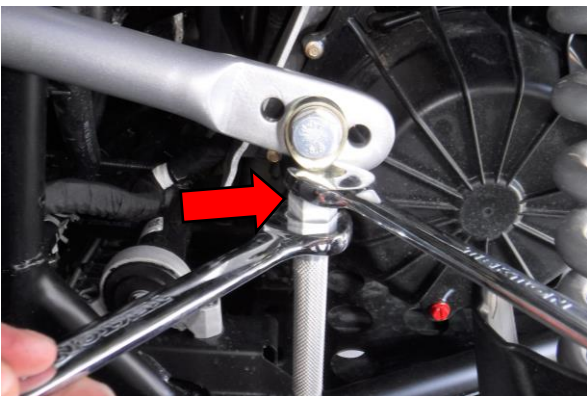
Step 11

Step 11. Slide the bolt through the anti-roll bar and secure it with the provided washer and nylock nut



Step 12

Step 12. Tighten the end link to the anti-roll bar as shown.



Step 13

Step 13. Doublecheck to make sure the ends are properly orientated, then, tighten the upper jam nut as shown.



Step 14

Step 14. Doublecheck to make sure the ends are properly orientated, then, tighten the lower jam nut as shown.