

Installation Instructions

Eibach Springs, Inc. • 264 Mariah Circle • Corona, California 92879-1751 • USA • Tech Support 800-222-8811 Ext 114



Anti-Roll-Kit # 4031.310

2006-2008 Honda Civic, All, exc. Hybrid

Kit Contents	Description	Part Number	Qty
	Front Bar	4031.320F	1
	Anti-Roll Hardware Kit	4031.310HK	1
	Information Kit	EPAK	1
	Instructions	4031.310INST	1

NOTES: Read All Instructions Before Beginning Installation

- **Only qualified mechanics experienced in the installation and removal of suspension components should perform this installation.**
- **Use** of a hoist and screw jack is highly recommended and will substantially reduce installation time.
- **Installation time:** Is approximate .5 hour with the use of a hoist.
- **Never work on or under a vehicle unless it is properly supported.**
- **Tire Rotation:** In order to increase the life of your tires, it is recommended to rotate your tires every 3,000 miles.

FACTORY FRONT BAR REMOVAL



Photo 1

1. Begin by removing front OE end link assembly from both ends of the factory bar. **(See Photo 1)** Note: The end links will be re-used to install the new Eibach front bar.

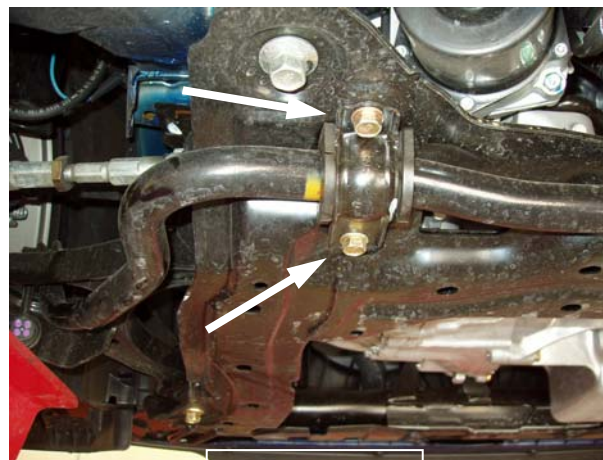


Photo 2

2. Next remove the frame mount bushing brackets securing the bar to the vehicle. **(See Photo 2)** Note: The brackets will be re-used to install the new Eibach front bar.
3. Now remove the front bar from the vehicle.

EIBACH FRONT BAR INSTALLATION

1. Due to the increased size of the Eibach front anti-roll bar it will be necessary to use a hammer and a drift to create some clearance for the new Eibach front bar.

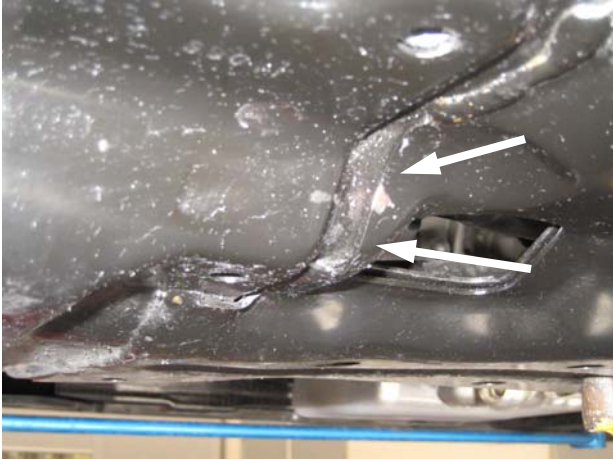


Photo 3



Photo 4

2. Using a hammer and drift, bend the metal as shown, when finished, scuff the paint with some sandpaper and touch it up with some paint. **(See Photos 3 & 4)**
3. Apply some poly lubricant to the inside of the new front bushings.
4. Installed the new bushings on the Eibach bar.



Photo 5

5. Install the new Eibach front bar using the stock bushing brackets. **(See Photo 5)**



Photo 6

6. Secure the OE end links to the new Eibach bar using the OE nuts. **(See Photo 6)**
7. Double check to make sure everything is properly tightened and positioned before driving the vehicle.