

# Installation Instructions

Eibach Springs, Inc. • 264 Mariah Circle • Corona, California 92879-1751 • USA • Tech Support 800-222-8811 Ext 114



## Anti-Roll-Kit # 35129.312

2011+ Ford Mustang, GT, 3.7L V6, 5.0L V8, Incl. Convertible

2011+ Ford Mustang Shelby GT500, Coupe and Convertible

Kit Contents	Description	Part Number	Qty
	Rear Bar	35129.320R	1
	Anti-Roll Hardware Kit	35129.312HK	1
	Information Kit	EPAK	1
	Instructions	35129.312INST	1

### NOTES: Read All Instructions Before Beginning Installation

- **Only qualified mechanics experienced in the installation and removal of suspension components should perform this installation.**
- **Use** of a hoist and screw jack is highly recommended and will substantially reduce installation time.
- **Installation time:** Is approximate **1.5** hours with the use of a hoist.
- **Never work on or under a vehicle unless it is properly supported.**
- **Tire Rotation:** In order to increase the life of your tires, it is recommended to rotate your tires every 3,000 miles.

### Additional Eibach Components Available For Your Car

Eibach Kits	Part Number	Description	Front	Rear
<i>Pro-Kit</i>	35125.140	High Performance Handling	.8-1.0"	1"-1.5"
<i>Sportline</i>	4.12535	Extreme Lowering	1.1-1.4"	1.5-2.0"

## FACTORY REAR BAR REMOVAL

1. With the vehicle safely supported, remove the rear wheels. **Note: Never work on or under a vehicle that is not properly supported with the appropriate safety equipment.**

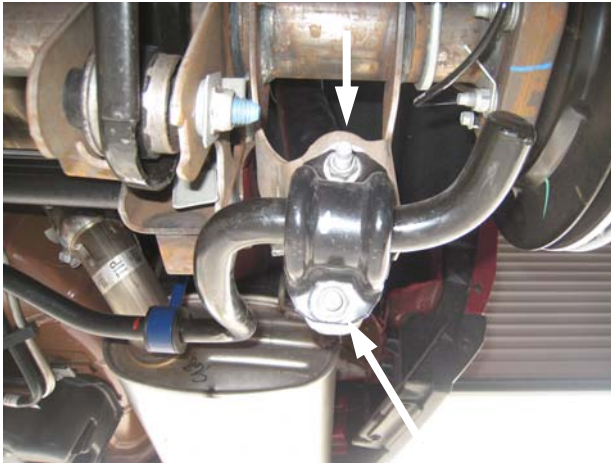


Photo 1

2. Remove the two nuts that secure the outer clamps to the lower shock mount bracket. **(See Photo 1)**



Photo 2

3. Remove the bolt that secures the end link to the upper mount, then, remove the OE bar from the vehicle. **(See photo 2)**

## EIBACH REAR BAR INSTALLATION

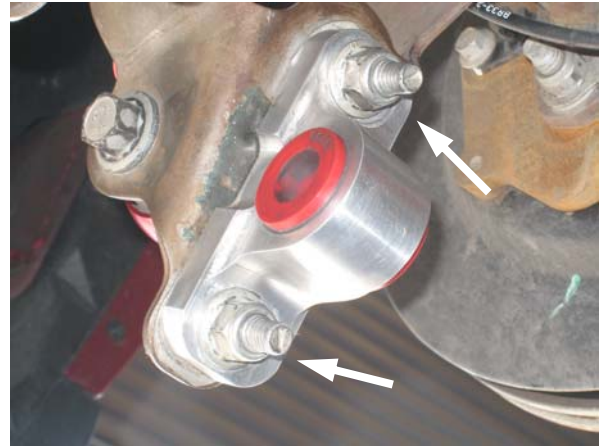


Photo 3

4. Install the new outer bar mount to the lower shock mounts using the original hardware as shown. **Note: Do not tighten completely at this time. (See Photo 3)**



Photo 4

5. Install the spacer sleeve into the outer mount as shown. **(See Photo 4)**

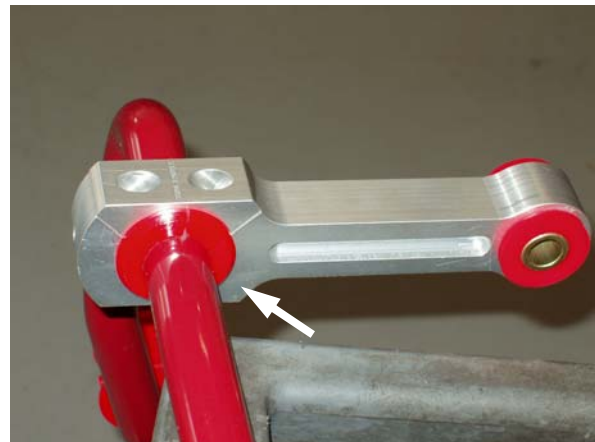


Photo 5

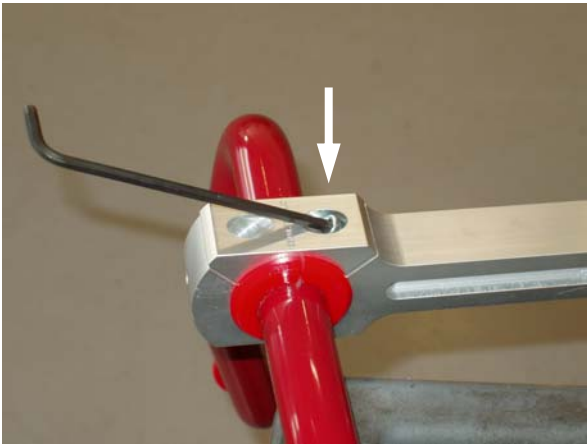


Photo 6

6. Lubricate the Eibach bushings, then install them onto the Eibach bar, then, install the end link and the end link cap as shown. Secure the end link cap with the provided cap screws and flat washers. (See photos 5 & 6)

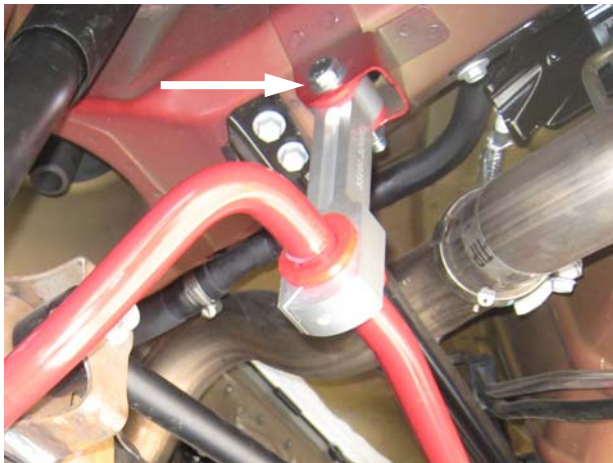


Photo 7



Photo 8

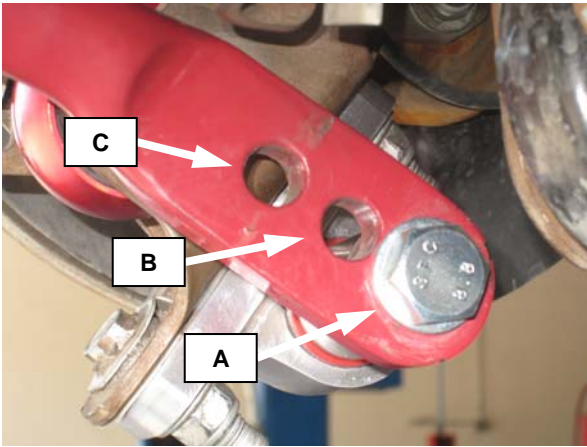


Photo 9

7. Install your new Eibach Anti-Roll bar in the car loosely by securing the end links to the factory mounts with the supplied nut and bolt for each side, then connect the ends of the bar to the outer mount using the supplied hardware. **Note: Place the bar into the vehicle in the orientation shown in the photos. (See photos 7, 8 & 9)**



8. Double check to make sure you have proper clearance, then, tighten all hardware.



## TUNING YOUR EIBACH REAR BAR

- a) Softest Setting.
  - Reduces over-steer
  - Use in rain or on slick roads.
  - Use on rough or bumpy roads.
  - Increases comfort.
- b) Mid Setting / Street Performance Setting.
  - Tuning out under or over-steer.
  - For normal driving conditions.
  - Dry street driving.
  - Use with additional trunk weight.
- c) Firmest Setting.
  - Reduces under-steer
  - Use on dry roads and tracks.
  - Use on smooth roads and tracks.
  - Do not use on wet or slick roads