

Installation Instructions

Eibach Springs, Inc. • 264 Mariah Circle • Corona, California 92879-1751 • USA • Tech Support 800-222-8811 Ext 114



Anti-Roll-Kit # 5701.312

Mini, Mini Cooper, 2002 >

Kit Contents	Description	Part Number	Qty
	Rear Bar	5701.320R	1
	Anti-Roll Hardware Kit	5701.312HK	1
	Information Kit	EPAK	1
	Instructions	5701.312INST	1

NOTES: Read All Instructions Before Beginning Installation

- **Only qualified mechanics experienced in the installation and removal of suspension components should perform this installation.**
- **Use** of a hoist and screw jack is highly recommended and will substantially reduce installation time.
- **Installation time:** Is approximate 1 hours with the use of a hoist.
- **Never work on or under a vehicle unless it is properly supported by safety stands and wheels are blocked.**
- **Tire Rotation:** In order to increase the life of your tires, it is recommended to rotate your tires every 3,000 miles.

FACTORY REAR BAR REMOVAL

1. Begin by removing the wheels, next remove both rear strut assemblies and disconnect the end links for the original factory bar.
2. Located at the front pivot point on the rear lower control arms are two blue ABS sensor plugs. There will be one on each side. (See photo 10)

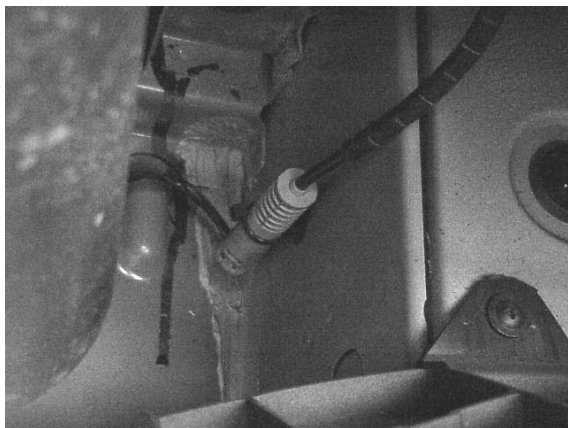


Photo 10 "Blue ABS sensor plug"

3. These need to be unplugged to allow room for the rear sub-frame to be lowered. (See photo 11)



Photo 11 "Blue ABS sensor plug"

4. Now it is necessary to remove the two 10mm bolts securing the rear portion of the exhaust heat shield. (See photo 12)

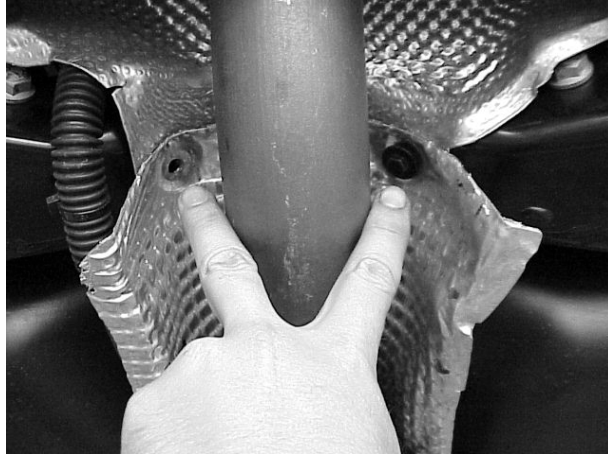


Photo 12 "Exhaust heat shield"

5. Place the screw under the sub-frame and remove the four 16mm bolts. There will be two on each side securing the sub-frame to the vehicle chassis. Once removed you can safely lower the sub-frame for clearance and remove the original rear bar. (See photo 13)

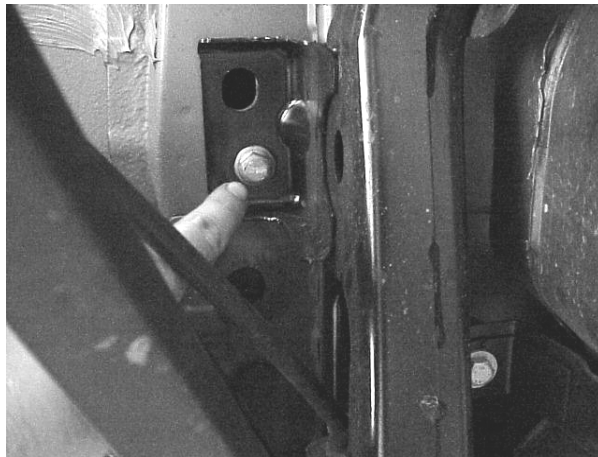


Photo 13

6. Once you have lowered the sub-frame you can now remove the four Anti-Roll-Bar brackets bolts and bushing clamps securing the rear Anti-Roll-Bar to the sub frame, there will be two on each side. Once the above hard wear is removed you can feed the bar out through either side of the rear fender wells.

EIBACH REAR BAR INSTALLATION

1. Now you are ready to apply the included lubricant to the inside of the new included rear replacement poly Anti-Roll-Bar bushing and install bushing on the new rear Anti-Roll-Bar with the cut opening towards the rear of the vehicle.
2. Installation of the new bar is simply the removal order reversed with the factory hardware being
3. reused.