

Installation Instructions

Eibach Springs, Inc. • 264 Mariah Circle • Corona, California 92879-1751 • USA • Tech Support 800-222-8811 Ext 114

Anti-Roll-Kit # E40-72-003-01-01

1990-1994 Porsche 911/964 Carrera 2

Kit Contents	Description	Part Number	Qty
	Rear Bar	AS41-72-003-01-RA	1
	Anti-Roll Hardware Kit	AK41-72-003-01-RA	1
	Bushing	UB0024	2
	Information Kit	EPAK	1
	Instructions	E40-72-003-01-01INST	1

NOTES: Read All Instructions Before Beginning Installation

- Only qualified mechanics experienced in the installation and removal of suspension components should perform this installation.
- Use of a hoist and screw jack is highly recommended and will substantially reduce installation time.
- Never work on or under a vehicle unless it is properly supported.
- **Tire Rotation:** In order to increase the life of your tires, it is recommended to rotate your tires every 3,000 miles.

FACTORY REAR BAR REMOVAL

1. Raise the vehicle and support it with the proper safety equipment. **Note: Never work on or under a vehicle that is not supported by the proper safety equipment.**



Photo 1

2. Disconnect the end links from both ends of the bar. (See Photo 1)



Photo 2

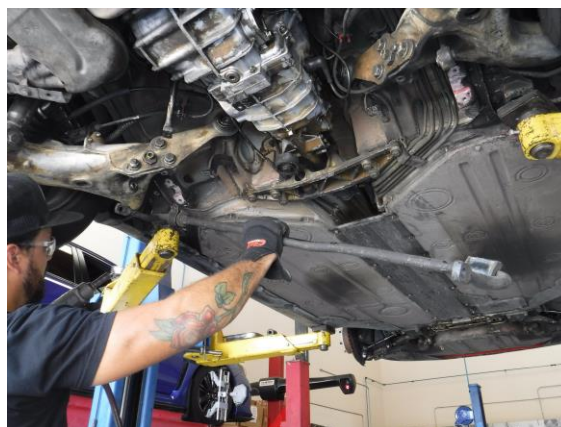


Photo 3

3. Loosen and remove the hardware that secures both the left and right side bushing brackets, then, remove the OE anti-roll bar. (See Photos 2 & 3) **Note: Be sure to**

note the orientation of the OE anti-roll bar as the Eibach bar will be installed in the same orientation.

EIBACH REAR BAR INSTALLATION



Photo 4



Photo 5

4. Apply some poly lubricant to the inside of the supplied Eibach bushings, then, install the bushings onto the Eibach bar. (See Photos 4 & 5)



Photo 6

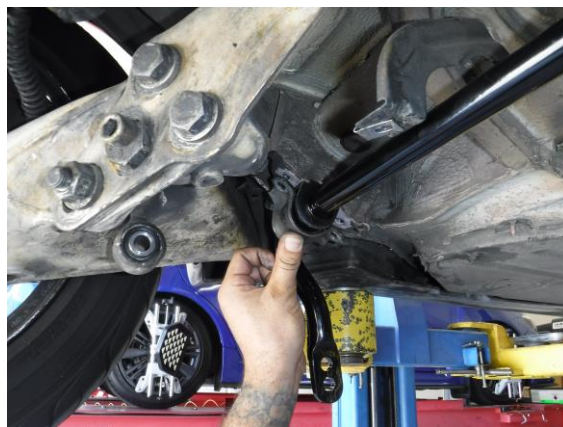


Photo 7

5. You can now install the Eibach bar and secure it using the OE bushing brackets and hardware. **Note: Be sure to reinstall the bar in the same orientation as the OE bar as specified in step 3 of the removal process. (See photos 6 & 7)**

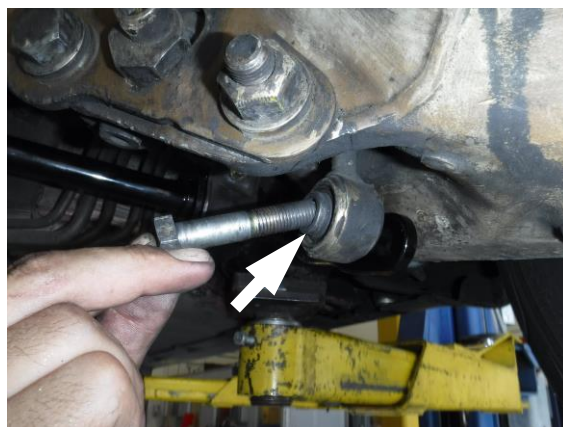
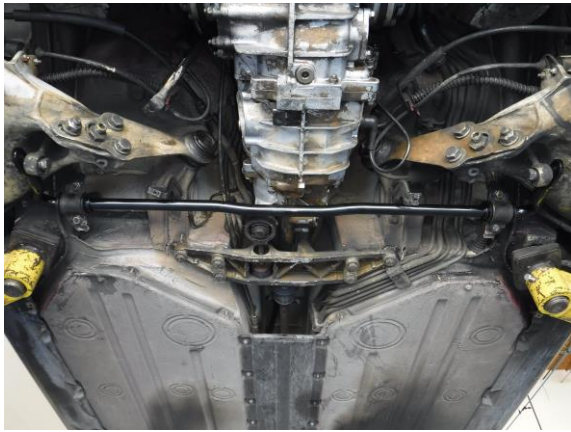


Photo 8



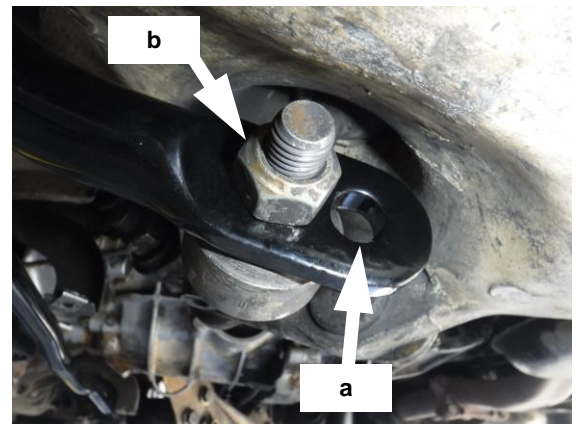
Photo 9

6. Secure the end links to the ends of the bar using the OE hardware. (See Photos 8 & 9)



7. Double check to make sure everything is properly positioned and tightened, then, do a road test.
8. After road testing, double check all hardware to make sure everything is properly tightened and positioned.

Tuning The Rear Bar.



- a) Softest Setting.
 - Reduces over-steer
 - Use in rain or on slick roads.
 - Use on rough or bumpy roads.
 - Increases comfort.
- b) Firmest Setting.
 - Reduces under-steer
 - Use on dry roads and tracks.
 - Use on smooth roads and tracks.
 - Do not use on wet or slick roads