

Installation Instructions

Eibach Springs, Inc. • 264 Mariah Circle • Corona, California 92879-1751 • USA • Tech Support 800-222-8811 Ext 114

Anti-Roll Bar Kit – #4017.310

Honda, Civic, 1992-1995, With Factory Front Anti-Roll Bar

Honda, Del Sol 1993-1997

Acura, Integra, 1994-2001, 2 & 4 Door, DC2/4, Incl GS, GS-R, RS, LS

Acura, Integra, 1997-2001, Type-R, DC2/4

Kit Contents	Description	Part Number	Qty
	Front Bar	4017.320F	1
	Instructions	4017.310INST	1
	Front Hardware Kit	4017.320FHK	1
	End-Link Assembly	ES16.8104RX	2
	Frame Mount Bushing	ES5633.02	2
	Frame Mount Spacer	4017.320FBS	2
	Bushing Lubricant	ARLUBICANT	1

NOTES: Read All Instructions Before Beginning Installation

1. Park vehicle on level surface and set emergency brake. Raise and support the vehicle with safety stands. Refer to factory manual for proper location of safety stands.
2. Power washing your chassis will make the installation cleaner.
 - **NOTE:** Never work on or under a vehicle unless it is properly supported by safety stands.

Removing the Factory anti-roll bar FRONT

1. To remove the front anti-roll bar, it will be necessary to disconnect a portion of the exhaust. Separate the exhaust between the manifold and the catalytic converter and allow the exhaust pipe to hang down providing clearance to remove the anti-roll bar. See Photo 1



2. Remove the 12mm bolt connecting the transmission shift linkage to the bottom of the shifter assembly and allow the linkage to hang down providing room to remove the anti-roll bar. See Photo 2



3. Remove the 12mm bolt connecting the shifter stabilizer link to the bottom of the transmission and allow the shifter stabilizer link to hang down providing room to remove the anti-roll bar. See Photo 3



Photo 3

4. Once the exhaust and linkage is disconnected (See Photo 4), remove the anti-roll bar end-links from between the lower control arms and anti-roll bar ends. See Photo 5



Photo 4



Photo 5

5. Now remove the two 12mm bolts and two 12mm nuts that hold the frame mount bushing brackets to the sub frame and remove the bar from the car. See Photo 6



Photo 6

Installing Eibach Springs Front Anti-Roll Bar

6. Apply the included polyurethane lubricant to the inside of the new urethane frame mount bushing, P/N ES5633. Now install the lubricated bushing onto the new Eibach anti-roll bar exactly like the factory bushing. See Photo 7



Photo 7

7. On some models, due to the larger bar diameter, it may be necessary to flatten the three ribs on the underside of the floor in the tunnel, located directly above the exhaust. Flatten these ribs using either



a long punch and hammer or an impact air gun.
See Photo 8

8.

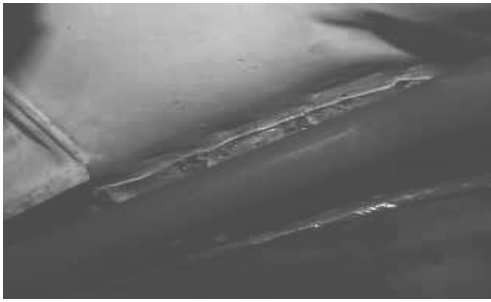


Photo 8

9. To ensure proper clearance it will be necessary to install the frame mount bracket spacers, P/N 4017.320FBS between the frame mount bracket and the sub frame using the longer bolts provided. The step in the spacer will face up and to the rear with the radius end toward the front. See Photo 9

10. Be sure the new urethane bushings and OE frame mount brackets are installed on the Eibach bar. Now install the Eibach bar in the same fashion as the OE bar was removed. Position the spacer between the bushing and the sub frame and install the supplied bolts with washers. See Photo 9

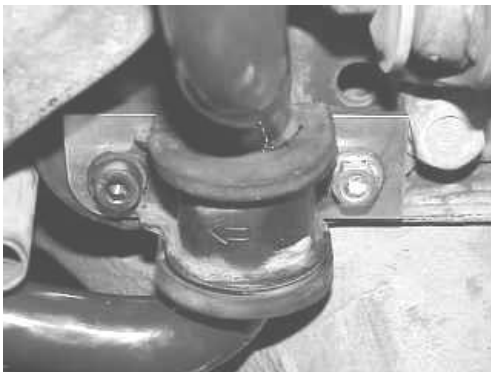


Photo 9
(Passenger Side Shown)

11. Now install the new end-links the same way the factory end-links were (The bushings mount on both sides of the sway bar and the control arm with washers next to the nuts)
See Photo 10



Photo 10

Additional Eibach components available for your Civic

Eibach kits	Part Number	Description
Pro-Kit	4017.140	Lowers Your Civic About 1.5"
SportLine	4.1740	Lowers Your Civic About 1.9"
Pro-Control Bar	4017.920	Strut Tower Brace To Reduce Chassis Flex.
Alignment Kit	5.84560K	Rear +/- .25 Degrees Of Adjustment.
Alignment Kit	5.84580K	Rear +/- .75 Degrees Of Adjustment.
Alignment Kit	6.13100K	Front + 1.0 to - 3.0 Degrees Of Adjustment.