



## NEW—NISSAN JUKE 2011-12

### PRO-KIT | Performance Springs

#### THE FIRST STEP IN SUSPENSION PERFORMANCE

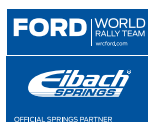
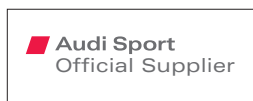
Eibach **PRO-KIT** is the perfect answer for most frequently-driven street cars. It's our legendary spring system that dramatically improves both a vehicle's performance and appearance.

**PRO-KIT** lowers your Juke's center of gravity, reducing squat during acceleration, body roll in corners and excessive nose-dive under braking. When combined with Plus-1 or Plus-2 wheels and tires, the Eibach **PRO-KIT** is the finishing touch to a winning recipe for performance. **PRO-KIT** also reduces excessive fender-well clearance, making your car look just as hot as it performs.

#### PRO-KIT #63106.540

- High Performance Handling and Aggressive Good Looks
- Lower Center of Gravity – Lowers Juke 1.4" Front and 1.1" Rear
- Stop Quicker, Corner Faster and get Better MPG
- Excellent Ride Quality
- Million Mile Warranty

Every Eibach **PRO-KIT** is designed and tested by our suspension engineers and driving professionals, to deliver high performance handling and aggressive good looks, without ever compromising safety or ride quality. By using our proprietary, progressive spring design, **PRO-KIT** provides the ultimate balance to take your passion for driving to a whole new level.



Continued

# PRO-KIT-NISSAN JUKE 2011-12 DATA:

## TECHNICAL INFORMATION

### FRONT:

OE rate: 27 N/mm (154 lbs/in)  
 PK rate: Progressive 27-52 N/mm (154-296 lbs/in)  
 Isolator Tubing: None  
 Bump-stop: OE  
 Damper: OE  
 OE wheel center to fender: 421 mm (16.6 in)  
 PK wheel center to fender: 386 mm (15.2 in)



Before-Stock

### Front Alignment:

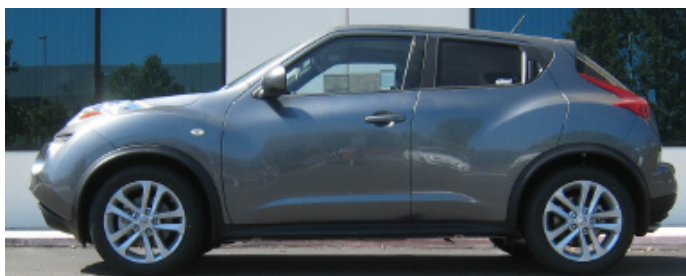
OE Camber = -0.42 +/-0.75 deg  
 OE Caster = 4.5 +/-0.75 deg  
 OE Total Toe = 0.17 +/-0.10 deg  
 PK Camber = -0.7 deg  
 PK Caster = 4.8 deg  
 PK Total Toe = 0.17 deg

PRO-KIT can be aligned to factory specifications.

Approximate installation time: 1.0 hr

### REAR:

OE rate: 67 N/mm (381 lbs/in)  
 PK rate: Progressive 39-75-91 N/mm (225-428-519 lbs/in)  
 Isolator Tubing: Yes  
 Bump-stop: OE  
 Damper: OE  
 OE wheel center to fender: 419 mm (16.5 in)  
 PK wheel center to fender: 391 mm (15.4 in)



After-Eibach

### Rear Alignment:

OE Camber = -1.52 +/-0.50 deg  
 OE Toe = 0.35 +/-0.33 deg  
 PK Camber = -1.4 deg  
 PK Toe = 0.1 deg

PRO-KIT can be aligned to factory specifications.

Approximate installation time: 1.0 hr

PRO-KIT spring rates are measured as a system of the front or rear suspension. 10 millimeter of bump-stop deflection is included in the final rate of the system.

PRO-KIT



MFG	MODEL	YEAR	FRONT	REAR	PART#	SUGG.LIST	ETA
NISSAN	Juke, 1.6L 4 Cyl. Turbo. AWD (F15)	2011-12	1.4 in	1.1 in	63106.540	\$419.00	Aug.

**#1 Choice** of Motorsport Champions and Automotive Enthusiasts Worldwide!

