

# Installation Instructions

Eibach Inc. 264 Mariah Circle Corona, CA 92879  
USA Tech Support 800-507-2338 ext. 114



## PRO-UTV: E85-209-008-02-22

(17-23) RZR XP 4 1000 4-SEATER

### Notes

Stage 2 kit (PERFORMANCE)

Fits vehicles equipped with Walker Evans Shocks

Ride heights based off a 32" tire. (OE TIRE SIZE 29")

### Kit Contents

Description	Part Number	Quantity
FRONT SECONDARY SPRING	0800.300.0350S	2
FRONT MAIN SPRING	1000.300.0350S	2
REAR SECONDARY SPRING	1000.300.0200S	2
REAR MAIN SPRING	1800.300.0300S	2
HARDWEAR		
FRONT SPRING SLIDER	8001100	2
FRONT CROSSOVER RING	8001224	2
REAR SPRING SLIDER	8001498	2
REAR CROSSOVER RING	8001063	2

### Installation Notes

#### Read all instructions before beginning installation

- Only qualified mechanics experienced in the installation and removal of suspension components should perform this installation.
- Use of a hoist and screw jack is highly recommended and will substantially reduce installation time.
- Never work on or under a vehicle unless it is properly supported by safety stands and wheels are blocked.
- Never use impact wrenches or impact guns to install or remove shock absorber piston components, shafts and Piston rod nuts.
- All Eibach springs should be installed with the Eibach logo right-side-up.
- After Installation, inspect and adjust the following: Wheel Alignment; tire/wheel fender clearance when using aftermarket wheels or tires; brake line clearance and attachments; anti-lock-brake system sensors.

## FRONT INSTALLATION



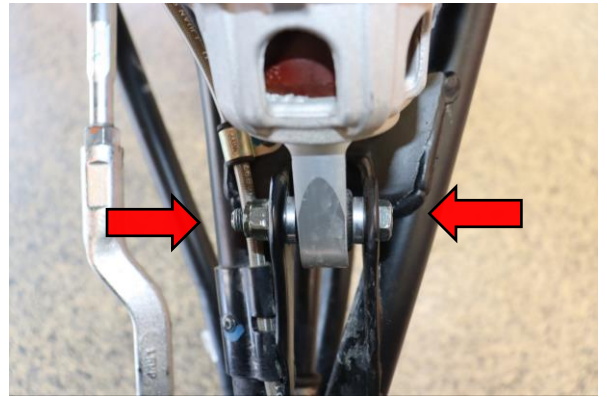
Step 1. Raise the front of the vehicle and support it with the proper safety equipment. **Note: Never work on or under a vehicle that is not supported by the proper safety equipment.**



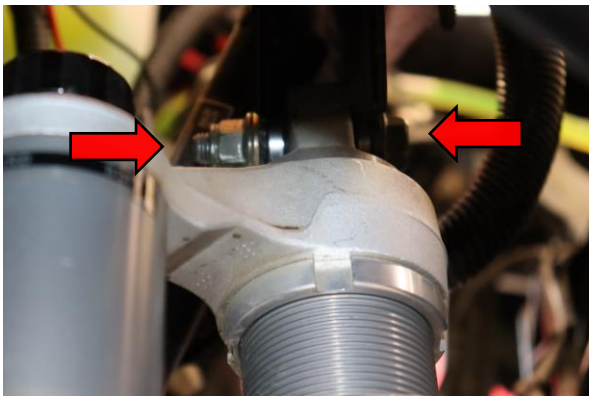
Step 2. Remove front cover to access upper shock bolts.



Step 3. Use a jack if vehicle is lifted on rack. Use a strap between the lower control arm and the frame to prevent damage to the axle from over extension.



Step 4. Remove lower shock mount nut using 15mm socket and wrench.



Step 5. Remove the upper shock hardware 15mm socket and wrench.



Step 6. Rotate shock out of upper and lower mounts and remove from the vehicle.



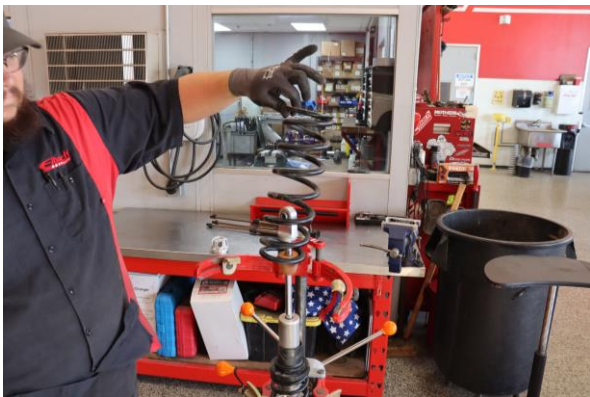
## FRONT INSTALLATION



Step 7. Use a spring compressor to compress the shock assembly. Push the lower bump stop down enough that the lower spring retainer can clear the lower shock mount. **Note: The bump stop may not move easily and could need the use of pry bars to move down the shock shaft. Be careful to not mar the shock shaft.**



Step 8. Remove the lower spring perch. Decompress the spring assembly.



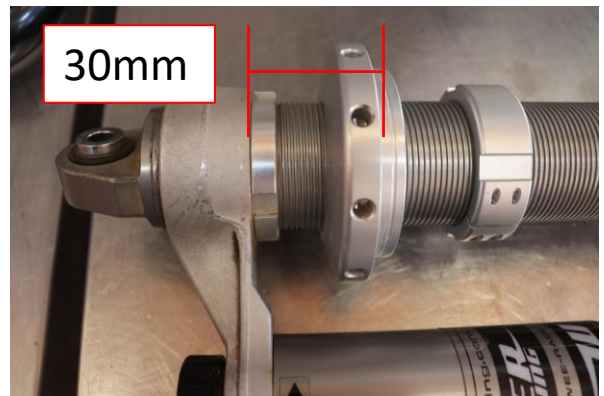
Step 9. Remove the OE main spring.



Step 10. Remove the OE spring slider.

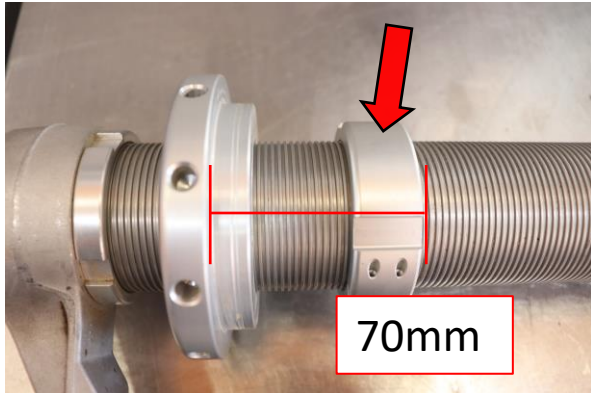


Step 11. Remove the OE front tender spring.



Step 12. Adjust the upper spring perch to **30mm (1 3/16")** measuring from the spring seat to the bottom of the bridge collar to set spring preload.

## FRONT INSTALLATION



Step 13. INSTALL 8001224 crossover rings to shock with the provided screws. After installed set rings at 70mm ( 2 3/4" ) measured between bottom of upper spring perch to bottom of crossover ring.



Step 14. Install Eibach front tender spring.



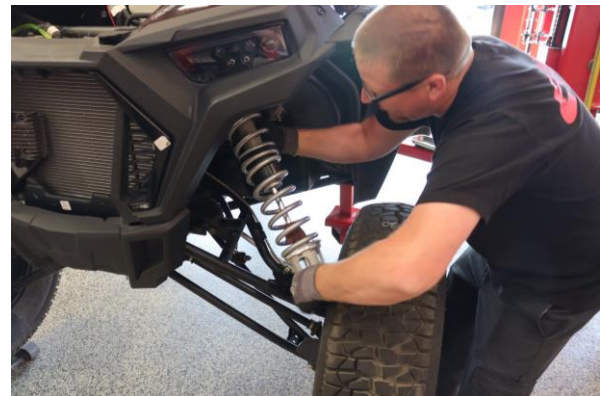
Step 15. Install Eibach provided slider part number (8001100).



Step 16. Install Eibach front main spring.



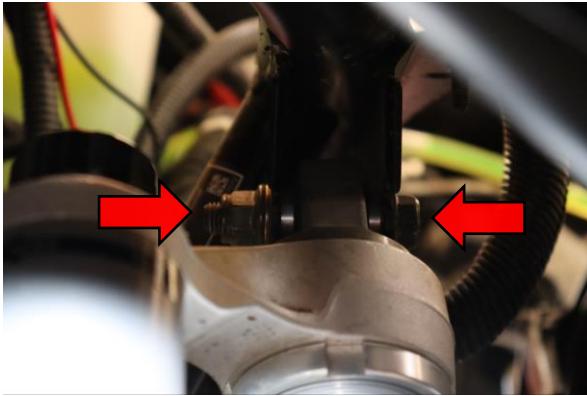
Step 17. Install OE lower spring perch. Decompress assembly and ensure lower spring perch engages lower shock mount fully.



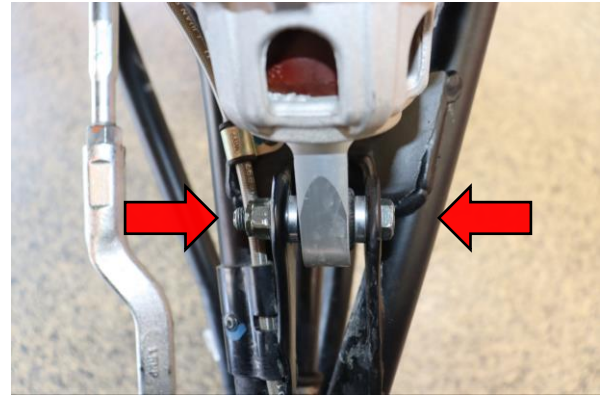
Step 18. Install shock assembly in the vehicle.



## FRONT INSTALLATION



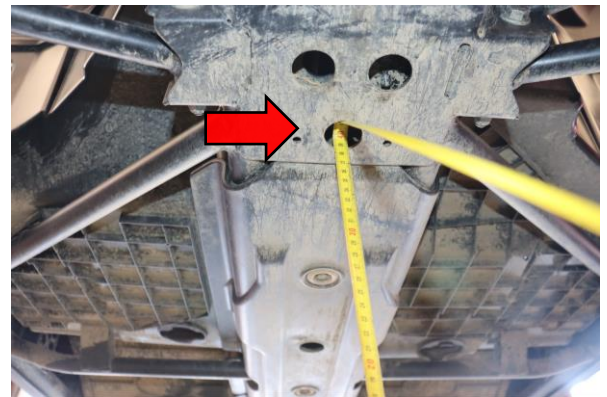
19. Install upper shock mount nut and bolt. Use 15mm socket and wrench and tighten to manufactures specification.



20. Install lower shock mount nut and bolt. Use two 15mm to tighten upper and lower shock mount nut and bolts to manufacturer specification.



21. Install front plastic cover.



22. Front skid plate measured from flat portion of front skid plate by the rear lower a-arm pivot.



Step 23. Lower the vehicle and drive a short distance to allow suspension to settle to a consistent ride height. Measure from the ground to the center of the front lower control arm bolt. The recommended preload measurement in **Step 12** will get the vehicle close to the recommended ride height but each vehicle may vary some. We recommend setting the ride height at **430mm (16 15/16")** measuring from the ground to the center of the lower control arm bolt. Due to sensitivity of weight on UTV's, some adjustment of preload may be needed to achieve desired ride height.

**Note:** Skid plate height should be approximately 14" measured from a flat portion front and rear (with the OE 29" tire). If you have larger than stock wheels and tires, the ride height will be increased. With a 32" tire it will be (15 1/2") of ground clearance measured at the skid plate.

## REAR INSTALLATION



Step 1. Raise the rear of the vehicle and support it with the proper safety equipment. **Note: Never work on or under a vehicle that is not supported by the proper safety equipment.**



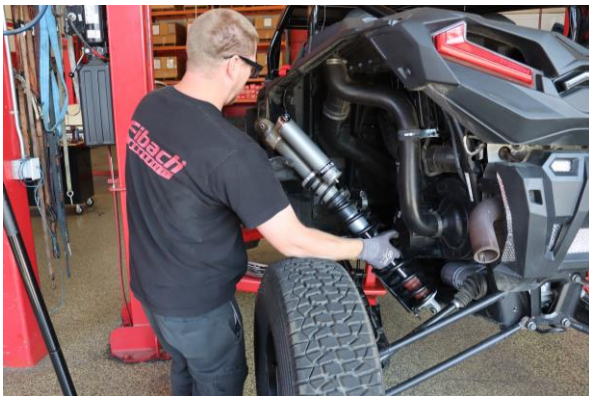
Step 2. Use a jack if vehicle is lifted on rack. Use a strap between the lower control arm and the frame to prevent damage to the axle from over extension.



Step 3. Remove the lower shock mounting nut and bolt using two 18mm. Lift the tire slightly to remove the lower shock bolt.



Step 4. Remove the upper shock mount nut and bolt using two 18mm.



Step 5. Lift the shock assembly up and out of the lower mount. Remove the shock assembly from the vehicle.



Step 6. Use a spring compressor to compress the springs.



## REAR INSTALLATION



Step 7. Remove the lower spring perch.  
Decompress the spring assembly.



Step 8. Remove the OE plastic shield.



Step 9. Remove the OE main spring.



Step 10. Remove the first OE spring slider.

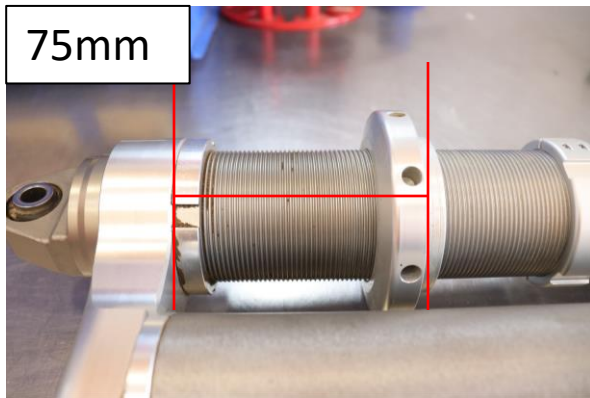


Step 11. Remove the OE tender spring.

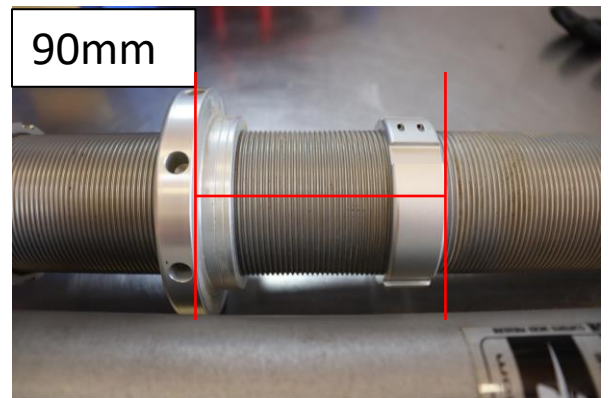


Step 12. Install supplied crossover ring's part  
number (8001063).

## REAR INSTALLATION



Step 13. Set pre-load to **75mm (2 15/16")** from bottom of spring seat to bottom of reservoir bridge collar.



Step 14. Adjust the Eibach supplied crossover ring to **90mm (3 9/16")** from bottom of spring seat to bottom of crossover ring.



Step 15. Install Eibach tender spring.



Step 16. Install Eibach spring slider with the short end facing the top of the shock.



Step 17. Install Eibach main spring.



Step 18. Compress the spring assembly. Install the OE plastic shield.



## REAR INSTALLATION



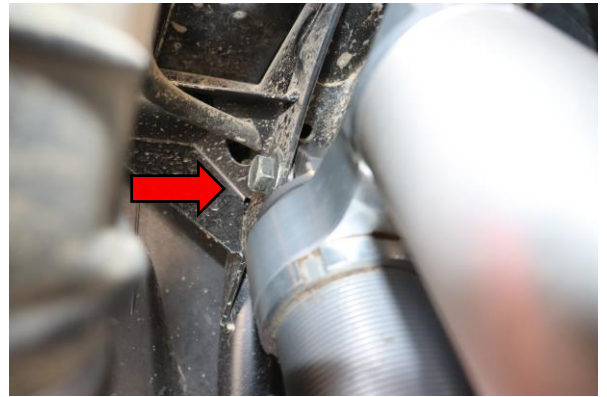
Step 19. Install the OE lower spring perch.



Step 20. Decompress the shock assembly ensuring the lower spring perch fully engages the lower shock mount.



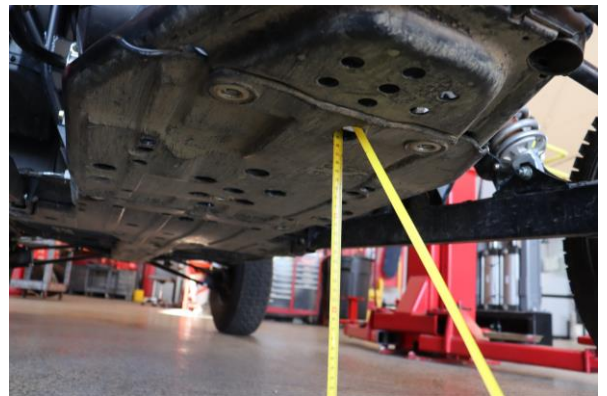
Step 21. Set the shock assembly in the vehicle.



Step 22. Install the upper shock mount nut and bolt. Use two 18mm to tighten to manufacturer specification.



Step 23. Install the lower shock mount nut and bolt. Use two 18mm to tighten to manufacturer specification.



Step 24. Measure from the bottom of the skid plate at the rear of the vehicle.

## REAR INSTALLATION



Step 25. Lower the vehicle and drive a short distance to allow suspension to settle to a consistent ride height. Measure from the ground to the center of the rear lower control arm bolt. The recommended preload measurement in **Step 13** will get the vehicle close to the recommended ride height but each vehicle may vary some. We recommend setting the ride height at **460mm (18 1/8")** measuring from the ground to the center of the lower control arm bolt. Due to sensitivity of weight on UTV's, some adjustment of preload may be needed to achieve desired ride height.

---

**Note: Skid plate height should be approximately 14" measured from a flat portion front and rear (with the OE 29" tire). If you have larger than stock wheels and tires, the ride height will be increased. With a 32" tire it will be (15 1/2") of ground clearance measured at the skid plate.**

Eibach recommended compression settings

Front: 7 clicks out from fully soft

Rear: 5 clicks from fully soft