

Installation Instructions

Eibach Inc. 264 Mariah Circle Corona, CA 92879
USA Tech Support 800-507-2338 ext. 114



PRO-ALIGNMENT UCA: AK31-35-037-01-20

2004 - 2020 Ford F-150 4x4

Notes

Kit Contents

Description	Part Number	Quantity
Upper Control Arm - Driver	8001580-D	1
Upper Control Arm - Passenger	8001580-P	1

Installation Notes

Read all instructions before beginning installation

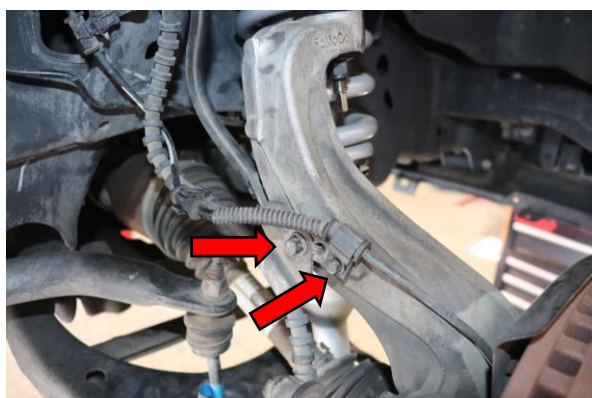
- Only qualified mechanics experienced in the installation and removal of suspension components should perform this installation.
- Use of a hoist and screw jack is highly recommended and will substantially reduce installation time.
- Never work on or under a vehicle unless it is properly supported by safety stands and wheels are blocked.
- Never use impact wrenches or impact guns to install or remove shock absorber piston components, shafts and Piston rod nuts.
- All Eibach springs should be installed with the Eibach logo right-side-up.
- After Installation, inspect and adjust the following: Wheel Alignment; tire/wheel fender clearance when using aftermarket wheels or tires; brake line clearance and attachments; anti-lock-brake system sensors.



1. Raise the vehicle on a suitable hoist and support it with the proper safety equipment.



2. Remove both front wheels.



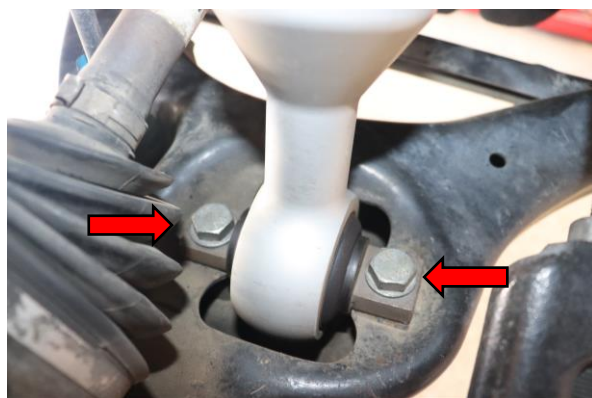
3. Remove 10mm brake line bracket bolt and 8mm ABS wire bolt from steering knuckle



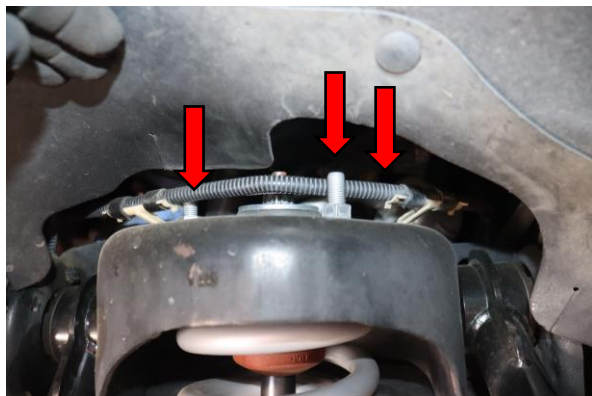
4. Remove 21mm outer tie rod nut and use a hammer to knock tie rod from steering knuckle.



5. Remove 18mm nut connecting sway bar end link to lower control arm.



6. Remove lower shock mounting hardware NOTE (OE shocks will have 2 studs with 15mm nuts. Remove nuts and use hammer to remove studs for lower shock removal OE) If equipped with Eibach shocks remove lower shock mounting bolts 19mm.



7. Remove top hat mounting hardware from frame.
NOTE (OE hardware will be 18mm. If equipped with Eibach shocks remove 3x 14mm hardware from frame.



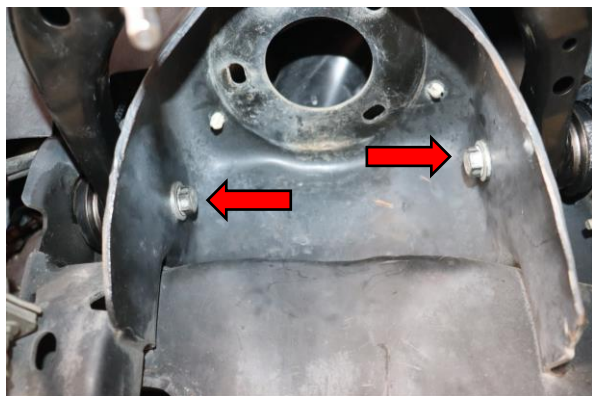
8. Use straps to hold steering knuckle from damaging front axles.



9. Remove 18mm nut from UCA ball-joint to steering knuckle and use hammer to separate the arm from knuckle.



10. Remove shock from truck.



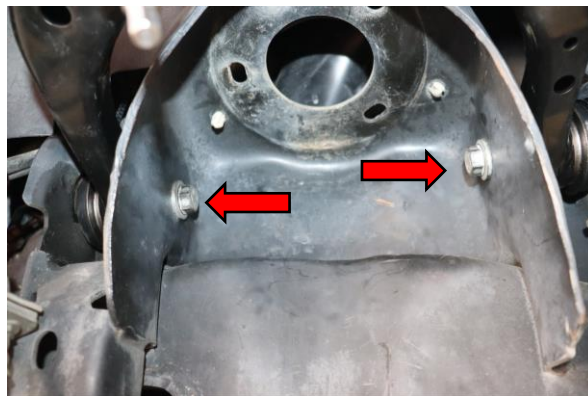
11. Remove UCA mounting hardware 18mm bolts and 21mm nuts.



12. Remove UCA from frame.



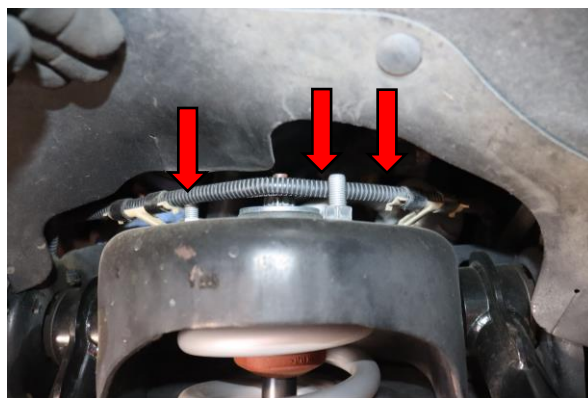
13. Install Eibach UCA to frame.



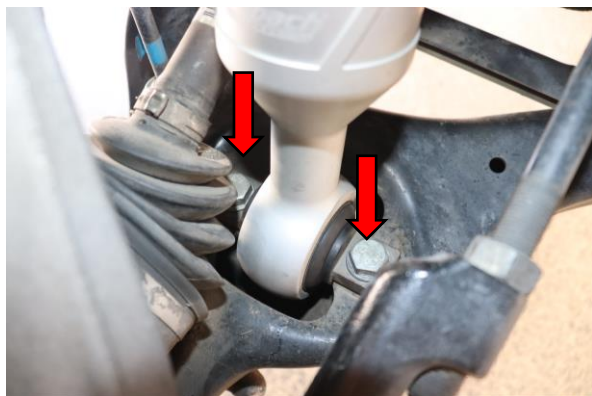
14. Install UCA mounting hardware 18mm bolts and 21mm nuts. OE torque spec (111 lb-ft)



15. Install shock into truck.



16. Install upper shock mount to frame. OE torque (45 lb-ft)



17. Install lower shock mounting hardware to lower control arm. (Eibach shocks kits supplied hardware 95 ft-lb) OE torque (66 lb-ft)



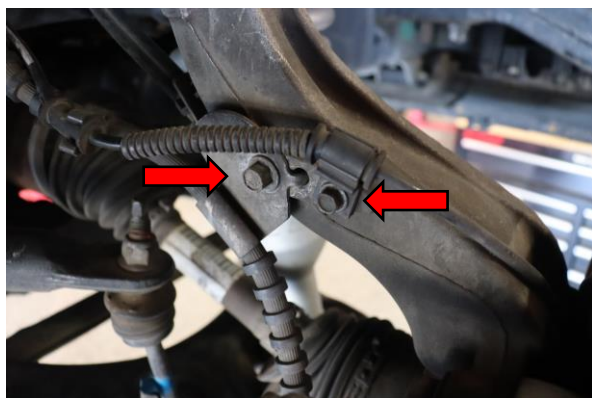
18. Install upper control arm to steering knuckle use supplied washer between nut and knuckle. OE torque spec (85 lb-ft)



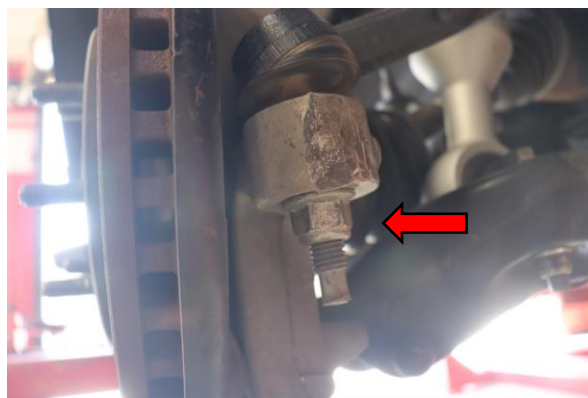
19. Remove strap holding steering knuckle.



20. Install hardware for sway bar end link to lower control arm 18mm. OE torque spec (62 lb-ft)



21. Install 10mm brake line bracket bolt and 8mm ABS wire bolt from steering knuckle



22. Install 21mm outer tie rod nut and use a hammer to knock tie rod from steering knuckle. OE torque spec (76 lb-ft)



23. Install wheels on truck.