

Installation Instructions

Eibach Inc. 264 Mariah Circle Corona, CA 92879
USA Tech Support 800-507-2338 ext. 114



PRO-UTV: E85-209-021-01-22

Polaris RZR PRO XP 4 Base/Sport/Premium

Notes

Fits vehicles equipped with Walker Evans Shocks

Ride heights based on the OE 30" tire

Kit Contents

| Description | Part Number | Quantity |
|------------------------|----------------|----------|
| FRONT SECONDARY SPRING | 1000.300.0250S | 2 |
| FRONT MAIN SPRING | 1200.300.0350S | 2 |
| REAR SECONDARY SPRING | 1200.300.0200S | 2 |
| REAR MAIN SPRING | 1800.300.0300S | 2 |
| FRONT SLIDER | 8001100 | 2 |
| REAR SLIDER | 8001498 | 2 |
| FRONT CROSSOVER RING | 8001224 | 2 |
| REAR CROSSOVER RING | 8001063 | 2 |

Installation Notes

Read all instructions before beginning installation

- Only qualified mechanics experienced in the installation and removal of suspension components should perform this installation.
- Use of a hoist and screw jack is highly recommended and will substantially reduce installation time.
- Never work on or under a vehicle unless it is properly supported by safety stands and wheels are blocked.
- Never use impact wrenches or impact guns to install or remove shock absorber piston components, shafts and Piston rod nuts.
- All Eibach springs should be installed with the Eibach logo right-side-up.
- After Installation, inspect and adjust the following: Wheel Alignment; tire/wheel fender clearance when using aftermarket wheels or tires; brake line clearance and attachments; anti-lock-brake system sensors.

FRONT INSTALLATION



Step 1. Raise the front of the vehicle and support it with the proper safety equipment. **Note: Never work on or under a vehicle that is not supported by the proper safety equipment.**



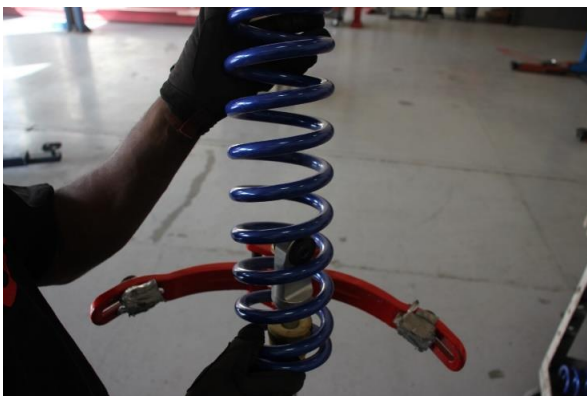
Step 2. Loosen and remove the hardware that secures the coilover to the upper and lower mounts. Then, remove the coilover from the vehicle as shown. (See Photos 1 & 2)



Step 3. Compress the coilover.



Step 4. Remove the spring retainer.



Step 5. Remove the OE main spring.

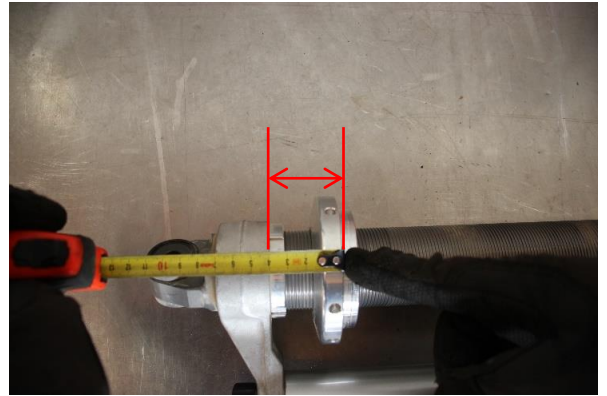


Step 6. Remove the OE slider.

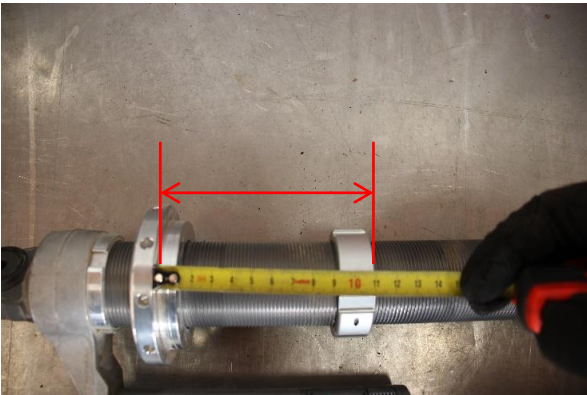
FRONT INSTALLATION



Step 7. Remove the OE secondary spring



Step 8. Set the preload collar to **65mm (2 9/16")** measuring from the base of the reservoir housing to the spring flange.



Step 9. Install the provided crossover rings and set them to **110mm (4 5/16")** measured from the preload collar to the crossover rings as shown.



Step 10. Tighten the allen screws.



Step 11. Install the Eibach secondary spring.



Step 12. Install the Eibach spring slider.

FRONT INSTALLATION



Step 13. Install the Eibach main spring.



Step 14. Compress the spring assembly and re-install the spring retainer.



Step 15. Reinstall the coilover.

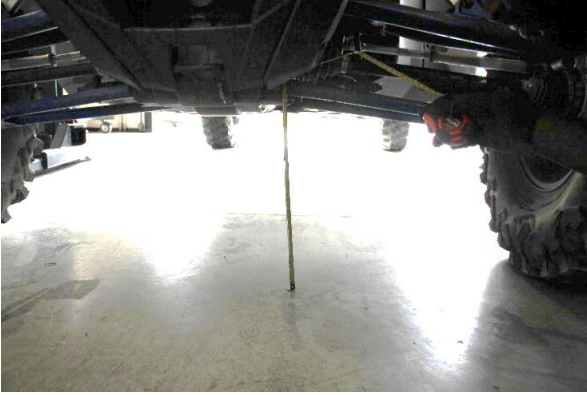


Step 16. Secure the coilover to the upper mount using the OE hardware.



Step 17. Secure the coilover to the control arm using the OE hardware.

FRONT INSTALLATION



Step 18. Measure from the ground to the center of the front lower control arm bolt. The recommended preload measurement in **Step 8** will get the vehicle close to the recommended ride height but each vehicle may vary some. We recommend setting the ride height at **400mm (15 3/4")**. **Note: Ride heights from the ground may vary depending on tire pressure and tire size. Skid plate height should be approximately 13.5" measured from a flat portion front and rear. Preload may need to be adjusted due to vehicle tolerances and weight distribution of accessories.**

REAR INSTALLATION



Step 1. Raise the rear of the vehicle and support it with the proper safety equipment. Loosen and remove the hardware that secures the coilovers to the control arm. **Note: Never work on or under a vehicle that is not supported by the proper safety equipment.**



Step 2. Loosen and remove the hardware that secures the coilover to the upper mount.



Step 3. Remove the coilover from the vehicle as shown.



Step 4. Compress the coilover and remove the spring retainer as shown.



Step 5. Remove the dust cover.



Step 6. Remove the OE main spring.

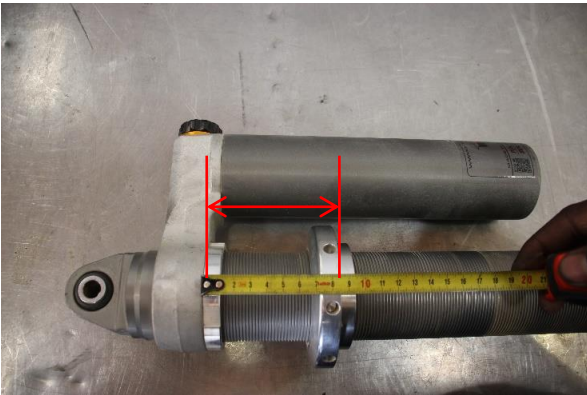
REAR INSTALLATION



Step 7. Remove the OE slider.



Step 8. Remove the OE secondary spring.



Step 9. Set the preload collar to **85mm (3 3/8")** measuring from the base of the reservoir housing to the spring flange.



Step 10. Install the cross-over rings and set them at **120mm (4 3/4")** measuring from the spring flange to the bottom of the crossover ring.



Step 11. Tighten the allen screws.



Step 12. Install the Eibach secondary spring.

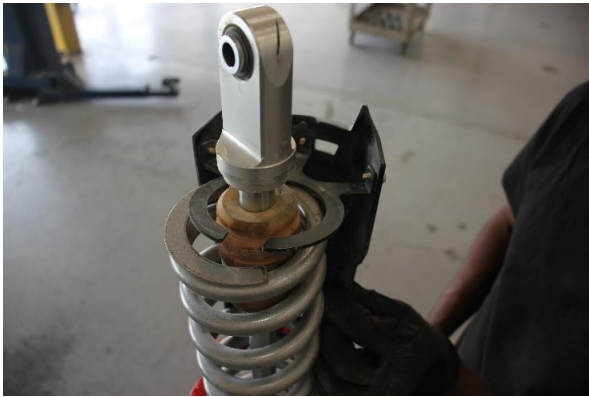
REAR INSTALLATION



Step 13. Install the Eibach spring slider.



Step 14. Install the Eibach main spring.



Step 15. Reinstall the dust cover.



Step 16. Reinstall the factory spring retainer.



Step 17. Reinstall the coilover.



Step 18. Secure the coilover to the upper mount with the OE hardware.

REAR INSTALLATION



Step 19. Secure the coilover to the control arm with the OE hardware.



Step 20. Measure from the ground to the center of the lower radius bolt. The recommended preload measurement in **Step 9** will get the vehicle close to the recommended ride height but each vehicle may vary some. We recommend setting the ride height at 400mm (15 3/4"). **Note: Ride heights from the ground may vary depending on tire pressure and tire size. Skid plate height should be approximately 13.5" measured from a flat portion front and rear. Preload may need to be adjusted due to vehicle tolerances and weight distribution of accessories.**

RECOMMENDED FRONT AND REAR SHOCK SETTINGS

Front: 8 clicks in from fully open.

Rear: Fully open.

Note: These are the recommended shock settings that we tested using the spring rates provided in this kit.

Note: Full open is counter clockwise.