

# Installation Instructions

Eibach Inc. 264 Mariah Circle Corona, CA 92879  
USA Tech Support 800-507-2338 ext. 114



## PRO-UTV: E40-209-035-01-01

2024 POLARIS XP1000 REAR SWAY BAR KIT

### Notes

### Kit Contents

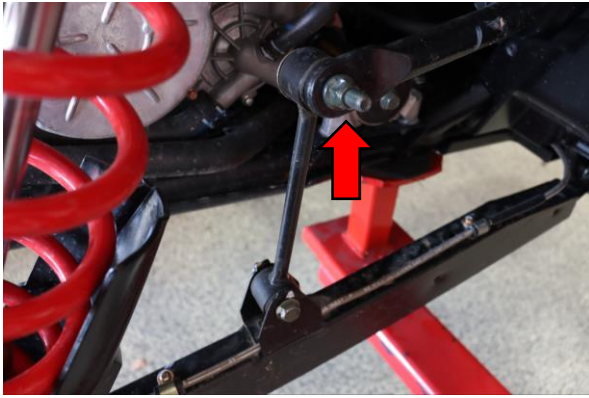
Description	Part Number	Quantity
REAR WAY BAR	AS41-209-003-01-RA	1
HARDWARE KIT	AS41-209-035-01-RHK	1
- ALUMINUM BRACKET	- UB0134	2
- BUSHING	- UB0270	2
- LUBRICANT	- AR.LUBRICANT	1
- M10-1.5x25mm BOLT	- H25024752	4
- M10-1.5 NYLOCK NUT	- H63024700	4
- ZERK FITTING	- H58041562	2

### Installation Notes

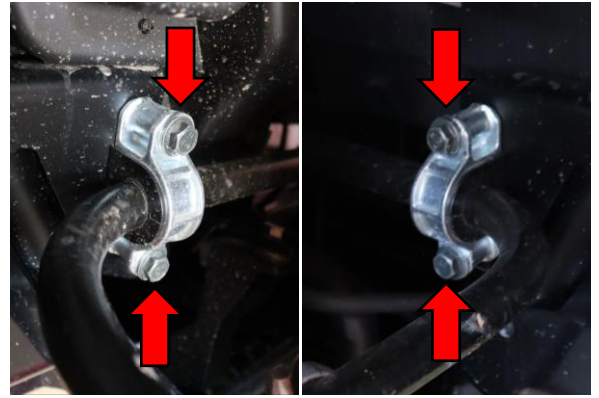
#### Read all instructions before beginning installation

- Only qualified mechanics experienced in the installation and removal of suspension components should perform this installation.
- Use of a hoist and screw jack is highly recommended and will substantially reduce installation time.
- Never work on or under a vehicle unless it is properly supported by safety stands and wheels are blocked.
- Never use impact wrenches or impact guns to install or remove shock absorber piston components, shafts and Piston rod nuts.
- All Eibach springs should be installed with the Eibach logo right-side-up.
- After Installation, inspect and adjust the following: Wheel Alignment; tire/wheel fender clearance when using aftermarket wheels or tires; brake line clearance and attachments; anti-lock-brake system sensors.

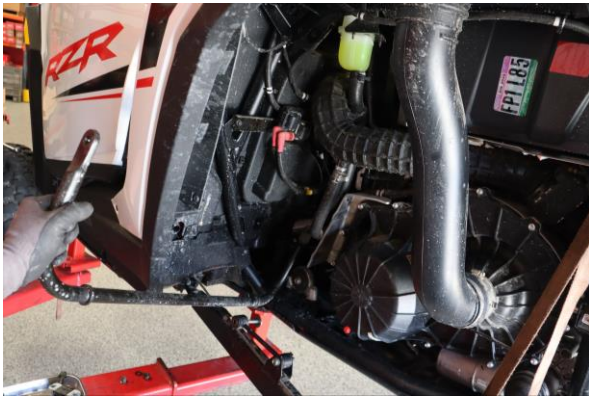
## FRONT INSTALLATION



Step 1. Remove 15mm upper sway bar end link nut and bolt on both the left and right side of the vehicle.



Step 2. Remove four left and right sway bar bracket bolts using 15mm.



Step 3. Remove the OE rear sway bar from the driver's side by rotating upward.



Step 4. Install the Eibach rear sway bar using the same orientation.



Step 5. Grease the inside of the Eibach sway bar bushings. Install Eibach sway bar brackets and bushings using supplied hardware.



Step 6. Install the sway bar end link using 15mm.

- |                                |                                |
|--------------------------------|--------------------------------|
| 1: Firmest setting             | 3: Softest setting             |
| • Least amount of body roll    | • More body roll               |
| • less suspension articulation | • Most suspension articulation |
| • Best for towing              | • Best for offroad             |