

# Installation Instructions

Eibach Springs, Inc. • 264 Mariah Circle • Corona, California 92879-1751 • USA • Tech Support 800-222-8811 Ext 114

## END LINK KIT # AK41-72-003-02-02

Kit Contents	Description	Part Number	Qty
	End Link	AK41-72-003-02-RA	2
	Instructions	AK41-72-003-02-02INST	1

### NOTES: Read All Instructions Before Beginning Installation

- Only qualified mechanics experienced in the installation and removal of suspension components should perform this installation.
- Use of a hoist and screw jack is highly recommended and will substantially reduce installation time.
- Never work on or under a vehicle unless it is properly supported.

### Installation of Eibach Adjustable rear end links.

1. Begin by raising the vehicle and supporting it with the proper safety equipment, then, remove the rear wheels. **Note: Never work on or under a vehicle that is not supported by the proper safety equipment.**

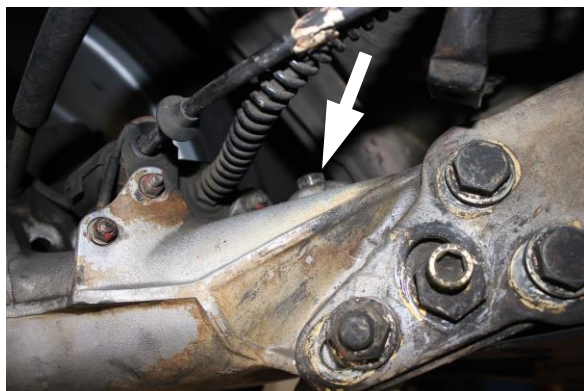


Photo 1

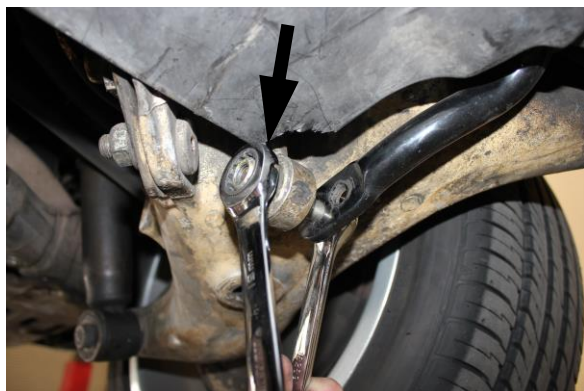


Photo 2

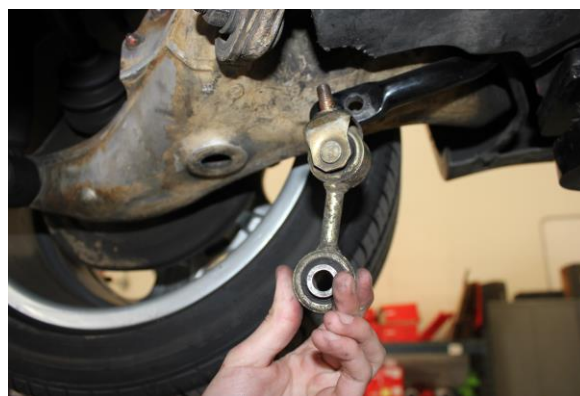


Photo 3

2. Loosen and remove the hardware that secures the OE end links to the bar and the hub, then, remove the end link. (See Photos 1, 2 & 3)

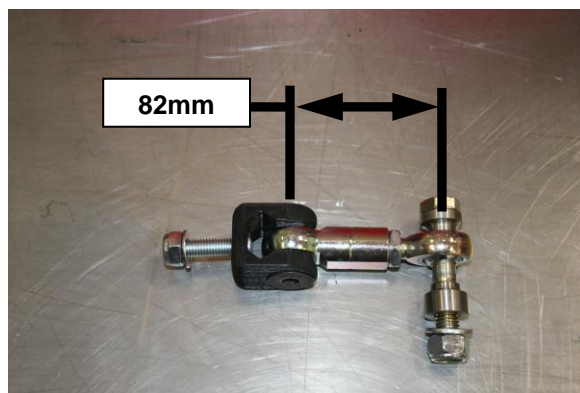


Photo 4

3. Adjust the Eibach end link to **82mm** measuring from center to center as shown. (See Photo 4)



Photo 5



Photo 6



Photo 7

4. Secure the end link to the control arm with the provided hardware as shown. (See Photos 5, 6 & 7)



Photo 8

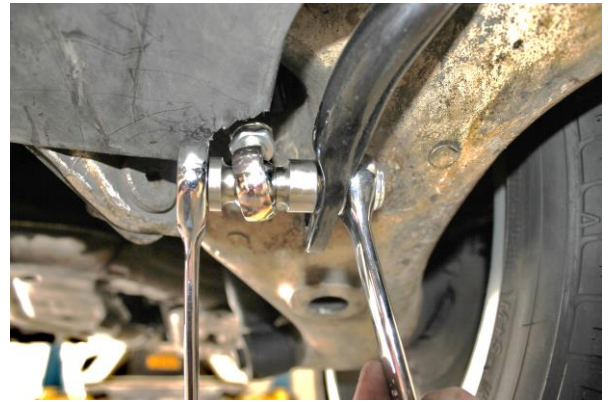


Photo 9

5. Secure the lower end of the link to the anti-roll bar using the provided hardware as shown. (See Photos 8 & 9)
6. With the hardware properly secured, make sure the ends are properly orientated, then, tighten the jam nut.
7. Repeat this procedure on the opposite side.
8. Double check to make sure everything is properly positioned and tightened, then, road test the vehicle.
9. After road testing, double check all hardware to make sure everything is properly tightened and re-tighten if necessary.