

Installation Instructions

Eibach Springs, Inc. • 264 Mariah Circle • Corona, California 92879-1751 • USA • Tech Support 800-222-8811 Ext 114

PRO-UTV #E85-209-016-03-22

Kit Contents	Description	Part Number	Qty
	Front Main Spring	1200.300.0350S	2
	Front Secondary Spring	0800.300.0300S	2
	Rear Main Spring	1800.375.0350S	2
	Rear Secondary Spring	1000.375.0250S	2
	Slider, Front	8001498	2
	Crossover Ring, Front	8001104	4
	Slider, Rear	8001501	2
	Crossover Ring, Rear	8001106	4
	Adapter, 3.50" to 3.75"	ADAPTER350-375.0	4
	Instructions	PRO.UTVINST	1

NOTES: Read All Instructions Before Beginning Installation

- Only qualified technicians experienced in the installation and removal of suspension components should perform this installation.
- Use of a hoist and screw jack is highly recommended and will substantially reduce installation time.
- Never work on or under a vehicle unless it is properly supported.

RECOMMENDED FRONT SET-UP

1. Raise the front of the vehicle and support it with the proper safety equipment. **Note: Never work on or under a vehicle that is not supported by the proper safety equipment.**



Photo 1

2. Disconnect the electrical connection from the shock as shown and unclip the wire harness from the top of the shock. (See Photo 1)



Photo 2

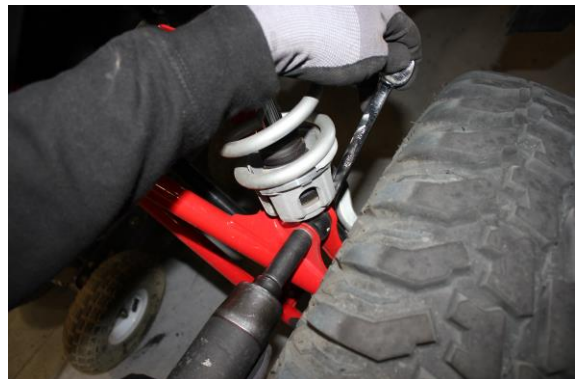


Photo 3



Photo 4

3. Loosen and remove the hardware that secures the coilover to the upper and lower mounts, then, remove the coilover from the vehicle as shown. (See Photos 2, 3 & 4)



Photo 5



Photo 6

4. Using the height adjustment tool, loosen the preload collar until there is no preload on the spring. (See Photos 5 & 6)

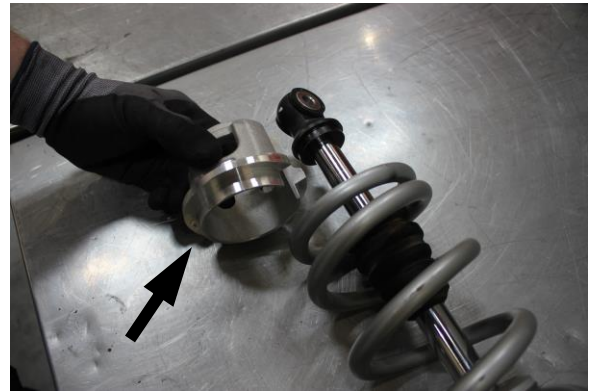


Photo 7



Photo 8

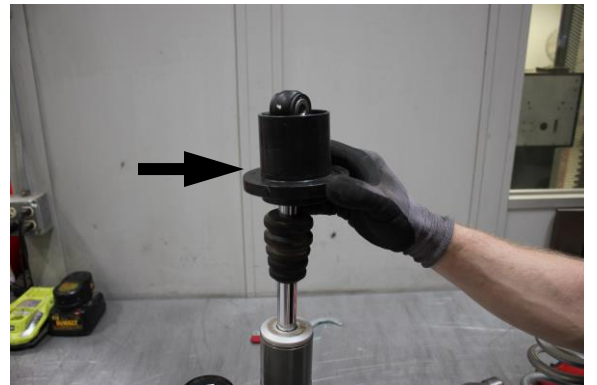


Photo 9

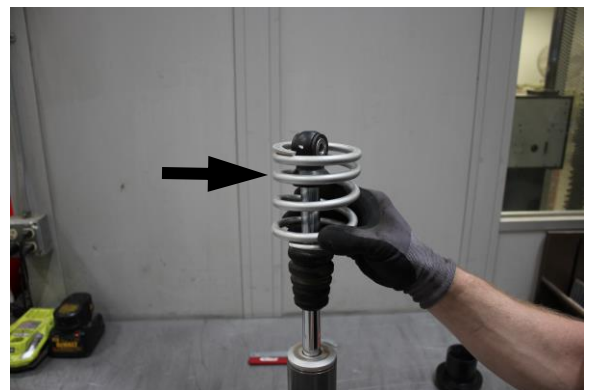


Photo 10

5. Press firmly downward on the spring assembly, then, remove the retainer, main spring, slider and secondary spring as shown. (See Photos 7, 8, 9 & 10)



Photo 11

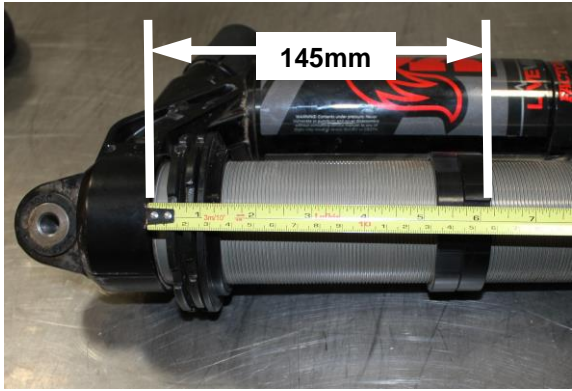


Photo 12

6. Install the Eibach crossover rings and set them at **145mm** measured from the bottom of the top mount to the bottom of the crossover rings as shown. (See Photos 11 & 12)



Photo 13



Photo 14

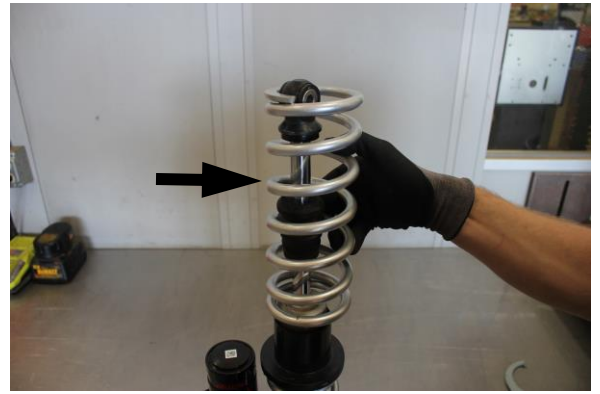


Photo 15

7. Install the Eibach secondary spring, provided slider, and Eibach main spring as shown. (See Photos 13, 14 & 15)



Photo 16

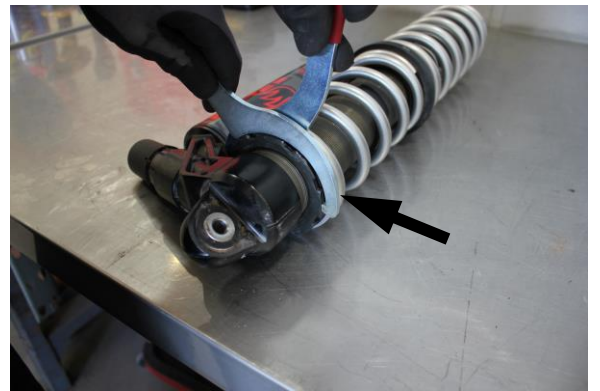


Photo 17

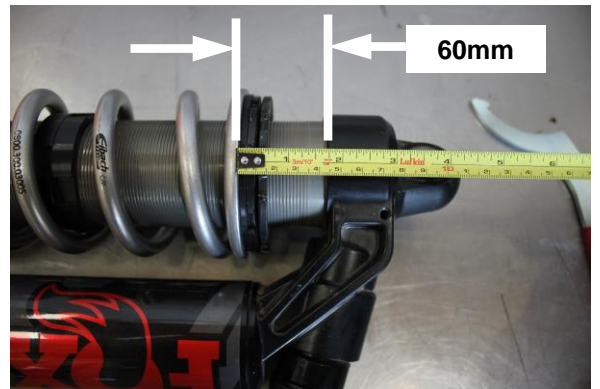


Photo 18

8. Install the OE retainer, then, adjust and set the preload collars to **60mm** as shown. (See Photos 16, 17 & 18)



Photo 19



Photo 20

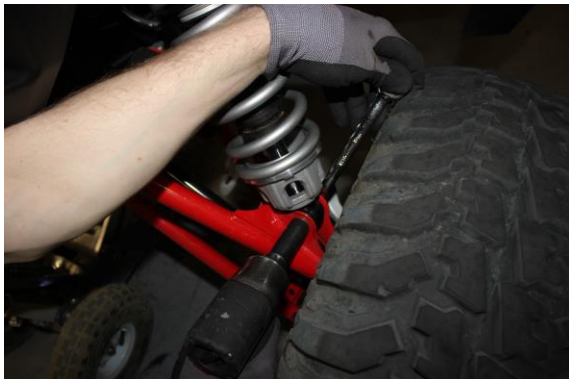


Photo 21

9. You can now reinstall the coilover using the factory hardware. (See Photos 19, 20 & 21)



Photo 22

10. Reconnect the electrical connection as shown. (See Photo 22)
11. Repeat the process on the opposite side, then, set the vehicle on the ground.
12. After the initial installation, the shocks will hold the vehicle up, so it will be necessary to turn the ignition on to reset the shocks prior to making any final ride height adjustments.

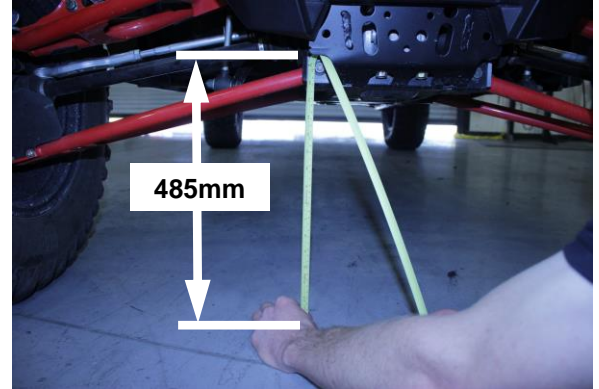


Photo 23

13. You can now adjust the preload collar to adjust the ride height. The recommended preload measurement in Step 8 Photo 18 will get the vehicle close to the recommended ride height but each vehicle may vary some. We recommend setting the ride height at **485mm** measuring from the ground to the center of the lower control arm bolt as shown. (See Photo 23)

RECOMMENDED REAR SET-UP

1. Raise the rear of the vehicle until the wheels are off the ground and the suspension is fully unloaded. **Note: Never work on or under a vehicle that is not supported by the proper safety equipment.**



Photo 24

2. Disconnect the electrical connection from the shock as shown and unclip the wire harness from the top of the shock. (See Photo 24)



Photo 25



Photo 26

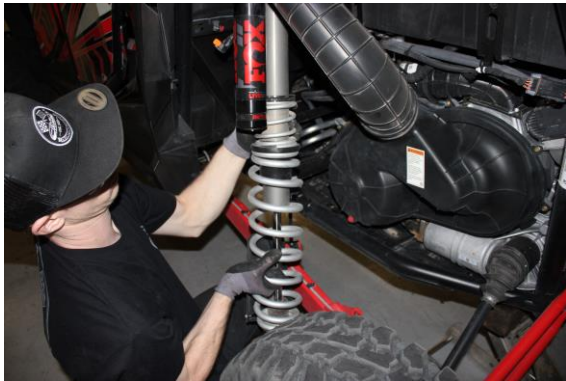


Photo 27

3. Loosen and remove the hardware that secures the coilover to the upper and lower mounts, then, remove the coilover from the vehicle as shown. (See Photos 25, 26 & 27)



Photo 28



Photo 29



Photo 30

4. Using the height adjustment tool, loosen the preload collar until there is no preload on the spring, then, remove the retainer and dust cover as shown. (See Photos 28, 29 & 30)



Photo 31



Photo 32

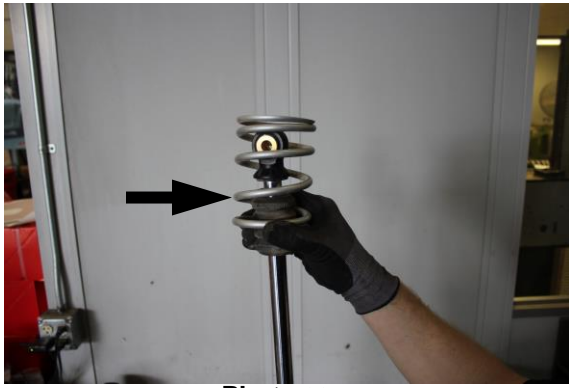


Photo 33

5. Remove the main spring, slider, and secondary spring as shown. (See Photos 31, 32 & 33)



Photo 34

6. Install the provided spring adapter as shown. (See Photo 34)

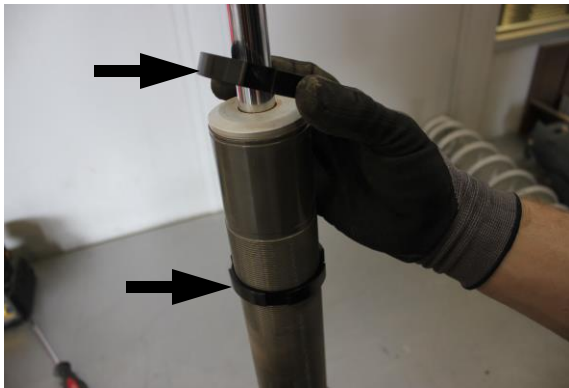


Photo 35

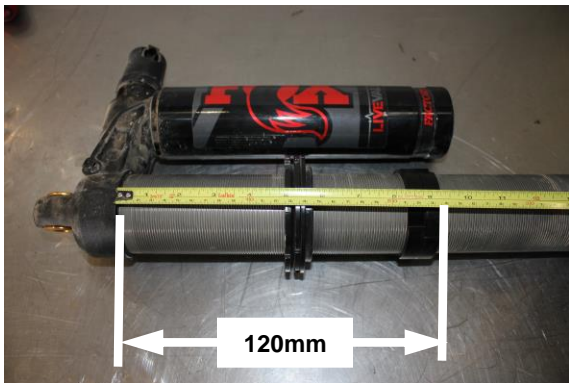


Photo 36

7. Install the provided crossover rings and set them at 120mm as shown. (See Photos 35 & 36)



Photo 37



Photo 38



Photo 39

8. Install the Eibach secondary spring, provided slider and main spring as shown. (See Photos 37, 38 & 39)

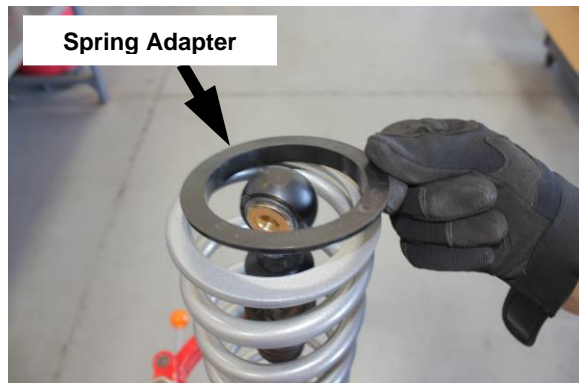


Photo 40

9. Install the provided spring adapter as shown. (See Photo 40)



Photo 41



Photo 42

10. Reinstall the OE dust shield and retainer as shown. (See Photos 41 & 42)

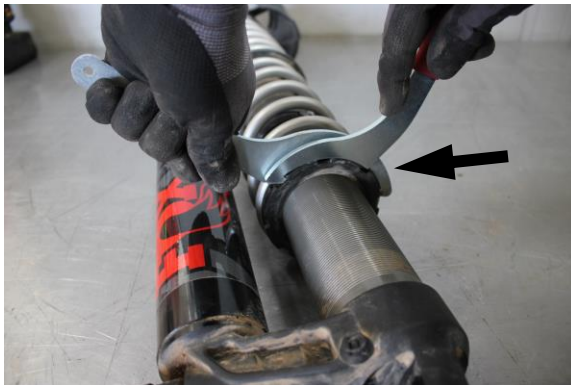


Photo 43

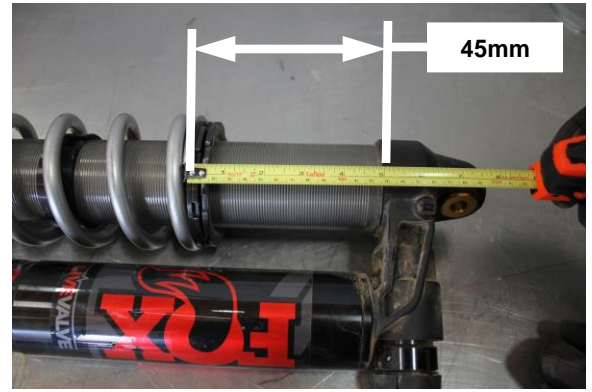


Photo 44

11. Adjust and set the preload collars to 45mm as shown. (See Photos 43 & 44)



Photo 45

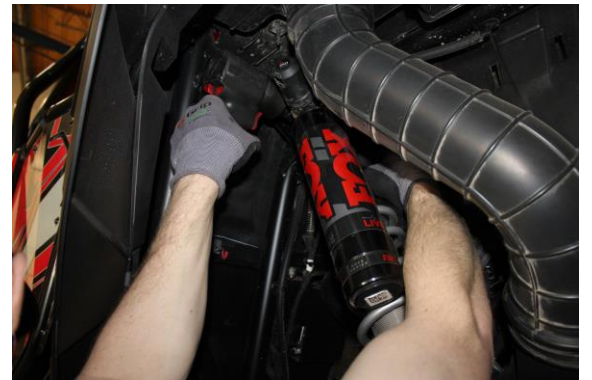


Photo 46



Photo 47

12. Install and secure the coilover to the upper and lower mounts using the OE hardware. (See Photos 45, 46 & 47)



Photo 48

13. Reconnect the electrical connection for the coilover as shown. (See Photo 48)
14. Repeat the process on the opposite side, then, set the vehicle on the ground.
15. **After the initial installation, the shocks will hold the vehicle up, so it will be necessary to turn the ignition on to reset the shocks prior to making any final ride height adjustments.**

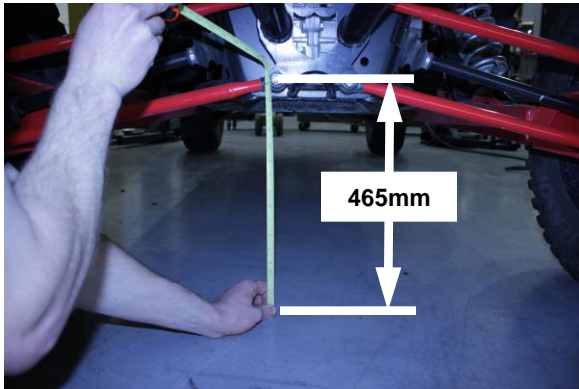


Photo 49

16. You can now adjust the upper preload collar to adjust the ride height. The recommended preload measurement in **Step 11 Photo 44** will get the vehicle close to the recommended ride height but each vehicle may vary some. We recommend setting the ride height at **465mm** measuring from the ground to the center of the lower control arm bolt as shown. (See Photo 49)

Electronic Shock Notes

After the initial installation the electronic shocks will hold the vehicle up. Turning the ignition key on will be necessary to reset the shocks to allow any final ride height adjustments as specified in Steps 12 and 15 of the front and rear installation.