

# Installation Instructions

Eibach Springs, Inc. • 264 Mariah Circle • Corona, California 92879-1751 • USA • Tech Support 800-222-8811 Ext 114

## Anti-Roll-Kit # 35143.312

2014+ Ford Fiesta & Fiesta ST

Kit Contents	Description	Part Number	Qty
	Rear Bar	35143.320R	1
	Anti-Roll Hardware Kit	35143.312HK	1
	Bolt, 12mm-1.75 x 35mm L.	H13025576	4
	Nut, 12mm Nylock	H63075500	4
	Washer, 12mm Flat	H50075200	8
	Information Kit	EPAK	1
	Instructions	35143.312INST	1

### NOTES: Read All Instructions Before Beginning Installation

- Only qualified mechanics experienced in the installation and removal of suspension components should perform this installation.
- Use of a hoist and screw jack is highly recommended and will substantially reduce installation time.
- Never work on or under a vehicle unless it is properly supported.
- **Tire Rotation:** In order to increase the life of your tires, it is recommended to rotate your tires every 3,000 miles.

### EIBACH REAR BAR INSTALLATION

1. Begin by raising the vehicle, then, support it with the proper safety equipment. **Note: Never work on or under a vehicle that is not supported by the proper safety equipment.**



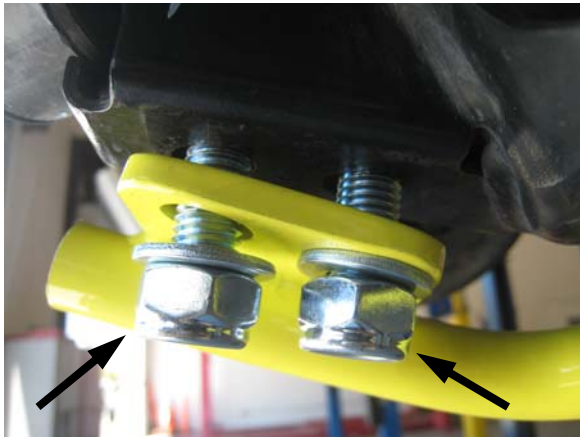
Photo 1

2. Support the rear axle with a screw jack, then, loosen and remove the bolts that secure the shocks to the lower shock mounts on both sides. **(See Photo 1)**



Photo 2

3. Installed the provided bolts and washers into the lower shock mount flange as shown. **(See Photo 2)**



**Photo 3**

4. Install the bar onto the rear axle using the provided nylock nuts and washers, but do not tighten at this time. **(See Photo 3)**



**Photo 4**

5. Tighten the provided hardware, double checking to make sure the bar is properly positioned and has good clearance. Readjust if necessary. **(See Photo 4)**



6. You can now reconnect the shocks to the lower shock mounts and secure them with the OE hardware.
7. Road test the vehicle, then, double check to make sure all the hardware is properly tightened and the bar has sufficient clearance. Readjust if necessary.