

Installation Instructions

Eibach Springs, Inc. • 264 Mariah Circle • Corona, California 92879-1751 • USA • Tech Support 800-222-8811 Ext 114



Anti-Roll-Kit # 7215.312

Porsche – 996 C4 Turbo 9/97-2004

Kit Contents	Description	Part Number	Qty
	Rear Bar	7215.320 HA	1
	Anti-Roll Hardware Kit	7215.312HK	1
	Information Kit	EPAK	1
	Instructions	D2672	1

NOTES: **Read All Instructions Before Beginning Installation**

- Only qualified mechanics experienced in the installation and removal of suspension components should perform this installation.
- Use of a hoist and screw jack is highly recommended and will substantially reduce installation time.
- Never work on or under a vehicle unless it is properly supported by safety stands and wheels are blocked.
- Tire Rotation: In order to increase the life of your tires, it is recommended to rotate your tires every 3,000 miles.

Additional Eibach Components Available For Your Car

Eibach Kits	Part Number	Description	Front	Rear
<i>Pro Kit</i>	7214.140	Performance Lowering	1.0"	1.0"
<i>Anti-Roll Kit – Front</i>	7215.310	Performance Handling	n/a	n/a
<i>Pro Street</i>	7215.710	C4 AWD Turbo <i>Coil Over</i>	1.2 - 2.5"	0.8 - 2.0"



FACTORY REAR BAR REMOVAL

1. Locate the factory rear bar, and remove the two 16mm nuts that attach the rear end links to the rear bar. See Photo 6.

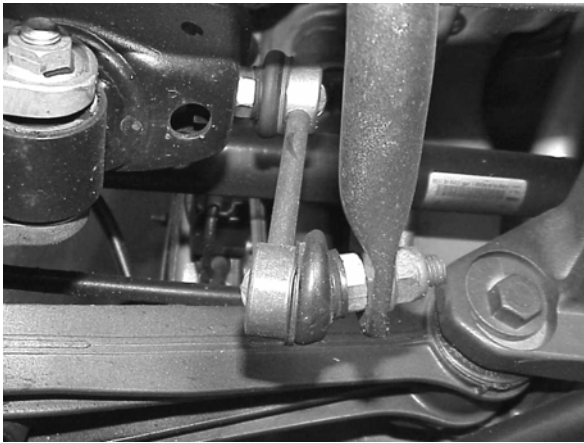


Photo 6

2. Remove the four 13mm bolts securing the frame mount bushing brackets to the chassis, the rear bar can now be removed from the car. See Photo 7.

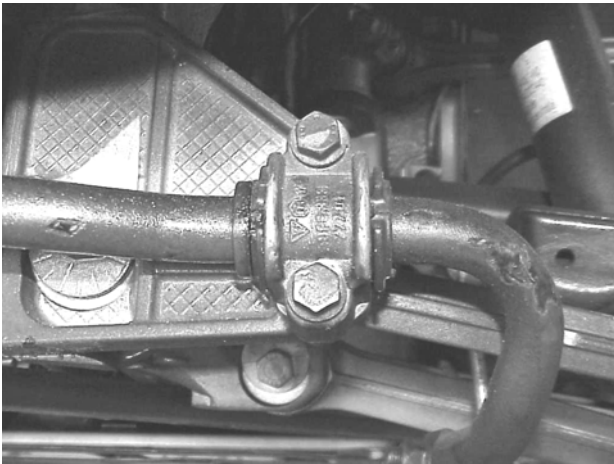


Photo 7

EIBACH REAR BAR INSTALLATION

1. Using the original bar as a guide, install the new **EIBACH** bushing on the new bar after lubricating the inside with the supplied lubricant.
2. The new **EIBACH** rear bar can now be installed in the car in the reverse order of the removal. You will notice that the **EIBACH** rear bar is three position adjustable, we have provided a tuning guide at the end of the instructions, but, like the front, we suggest starting with the bar in the softest setting to get familiar with the cars handling before making any adjustments. See Photo 8.

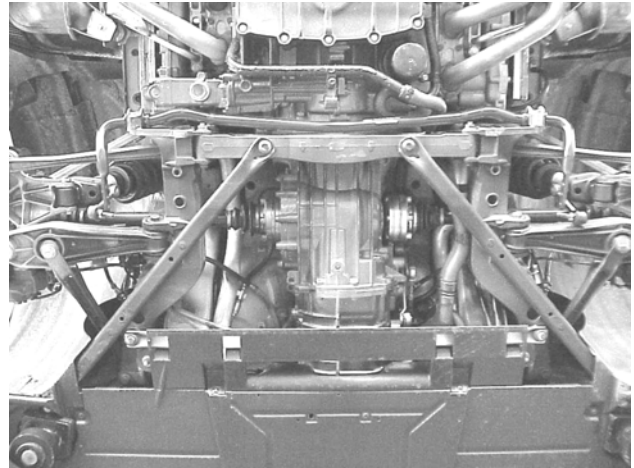


Photo 8

TUNING YOUR *EIBACH* BARS

FRONT

- A) Full Rear / Softest Setting.
 - Reduces under-steer.
 - Use in rain or on slick roads.
 - Use on rough or bumpy tracks.
 - Increases comfort.
- B) Mid Setting / Street Performance Setting.
 - Tuning out under or over-steer.
 - For normal driving conditions.
 - Dry street driving.
 - Use with additional trunk weight
- C) Full Forward / Firmest Setting.
 - Reduces over-steer
 - Use on dry roads and tracks.
 - Use on smooth roads and tracks.
 - Do not use on wet or slick roads.

REAR

- D) Full Forward / Softest Setting.
 - Reduces over-steer.
 - Use in rain or on slick roads.
 - Use on rough or bumpy roads.
 - Increases comfort.
- E) Mid Setting / Street Performance Setting.
 - Tuning out under or over-steer.
 - For normal driving conditions.
 - Dry street driving.
 - Use with additional trunk weight.
- F) Full Rear / Firmest Setting.
 - Reduces under-steer.
 - Use on dry roads and tracks.
 - Use on smooth roads and tracks.
 - Do not use on wet or slick roads.