

# Installation Instructions

Eibach Inc. 264 Mariah Circle Corona, CA 92879 USA Tech Support 800-507-2338 ext. 114



## PRO TRUCK COILOVER #E86-59-005-01-20

### Kit Contents

Description	Part Number	Quantity
Coilover Assembly 2.0	82123.9003	2
Height Adjustment Tool	ETCO2.0	1

### Notes

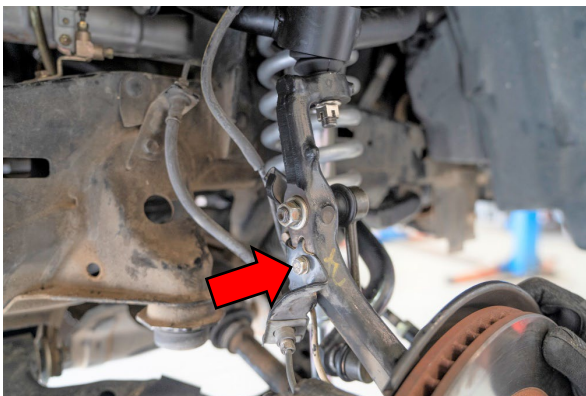
#### Read all instructions before beginning installation

Only qualified mechanics experienced in the installation and removal of suspension components should perform this installation.

Use of a hoist and screw jack is highly recommended and will substantially reduce installation time.

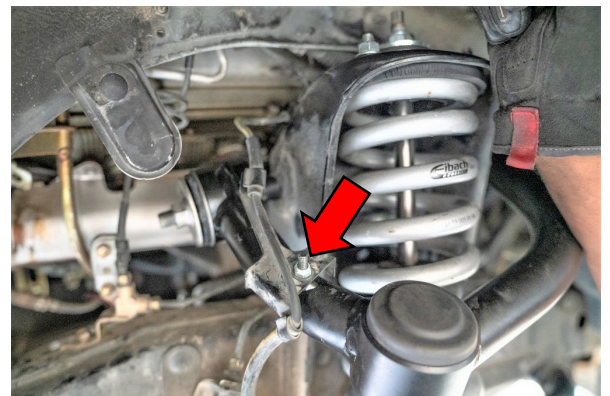
Never work on or under a vehicle unless it is properly supported.

### Installation



Step 1

Step 1. Remove the screw that secures the wheel speed sensor bracket to the knuckle.



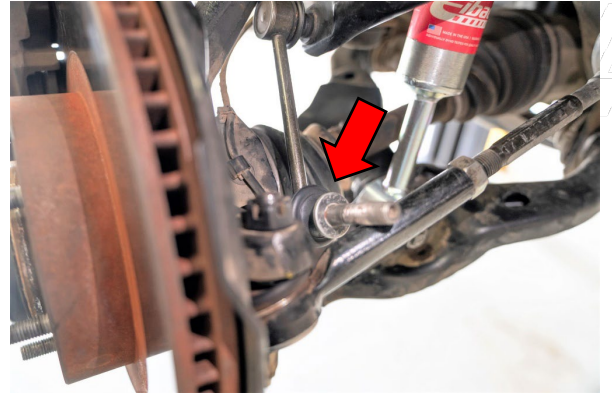
Step 2

Step 2. Remove the hex nut that secures the wheel speed sensor to the upper control arm.



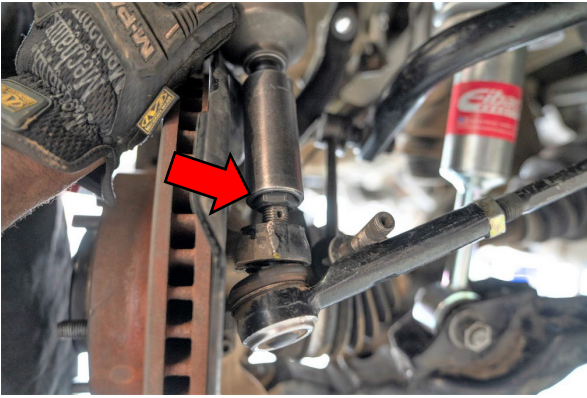
Step 3

Step 3. Loosen and remove the hex nut that secures the end link to the spindle.



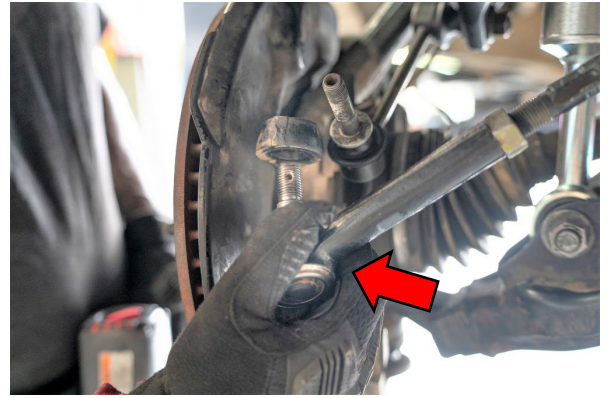
Step 4

Step 4. Disconnect the end link from the spindle and let it hang.



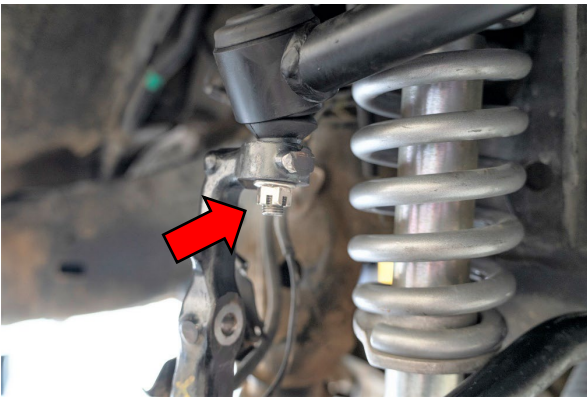
Step 5

Step 5. Remove the cotter pin from the castle nut on the tie rod, then, remove the castle nut from the tie rod.



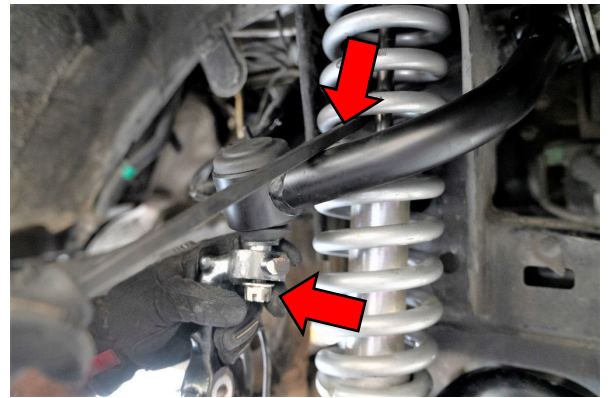
Step 6

Step 6. Disconnect the tie rod from the spindle.



Step 7

Step 7. Remove the cotter pin from the castle nut on the upper ball joint, then, loosen but do not remove the castle nut.



Step 8

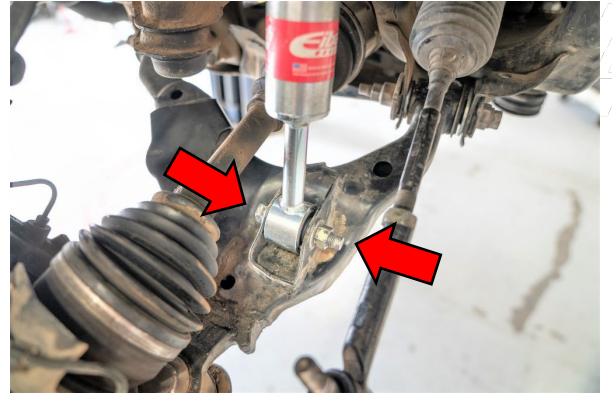
Step 8. Pry do on the upper control arm, then, remove the castle nut.





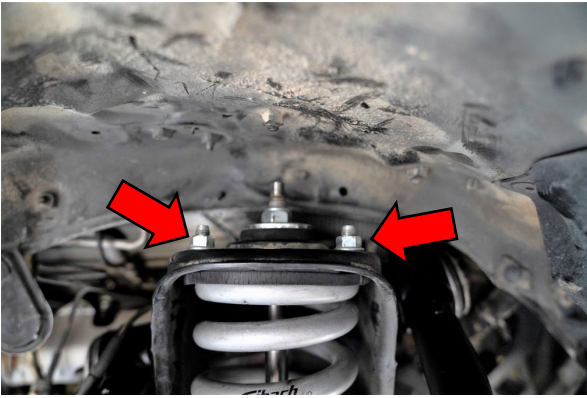
Step 9

Step 9. You can now separate the upper control arm from the spindle.



Step 10

Step 10. Loosen and remove the hardware that secures the lower shock mount.



Step 11

Step 11. Loosen and remove the hardware that secures the upper shock mount to the frame



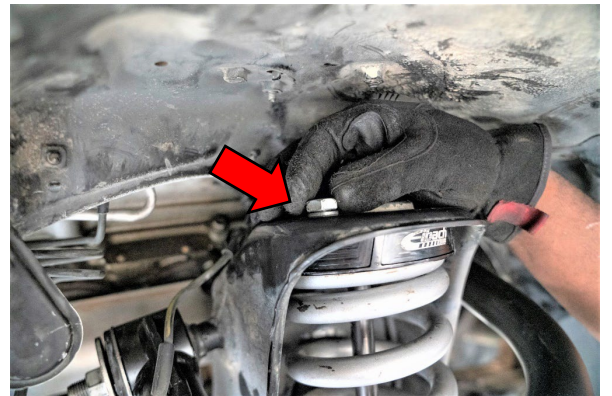
Step 12

Step 12. Remove the shock assembly from the vehicle.



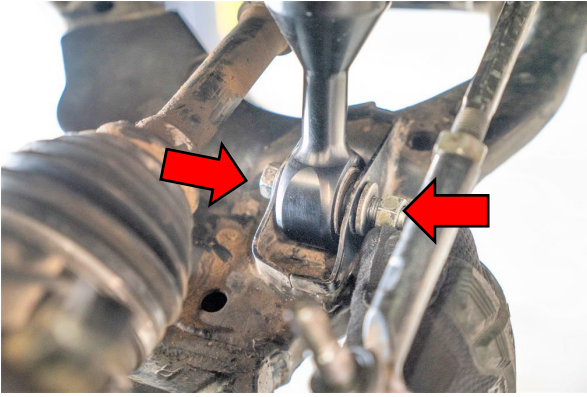
Step 13

Step 13. You can now install the Eibach Pro Coilover 2.0.



Step 14

Step 14. Loosely secure the coilover to the upper mount with the provided flange nuts.



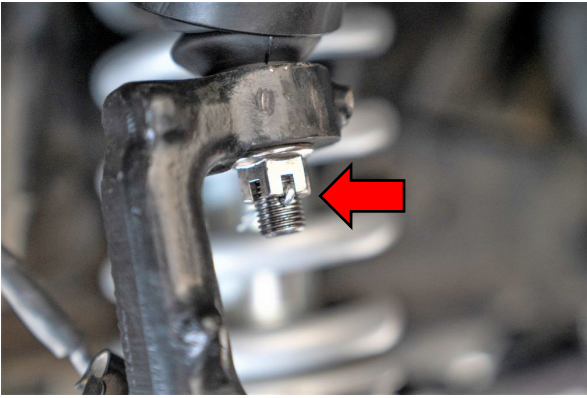
Step 15

Step 15. Secure the lower coilover mount to the control arm with the OE hardware.



Step 16

Step 16. Raise the control arm upwards, then, line up the spindle and upper control arm and secure the ball joint with the OE castle nut.



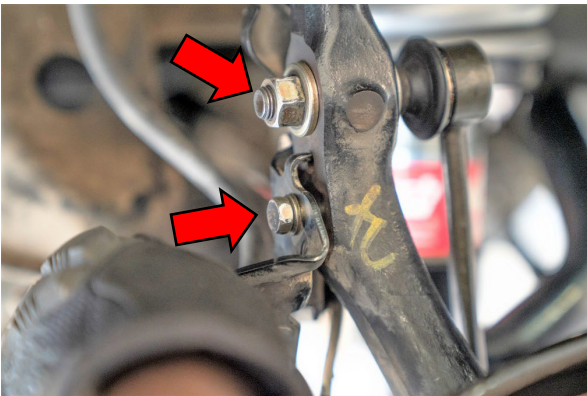
Step 17

Step 17. Torque the castle nut and reinstall the cotter pin.



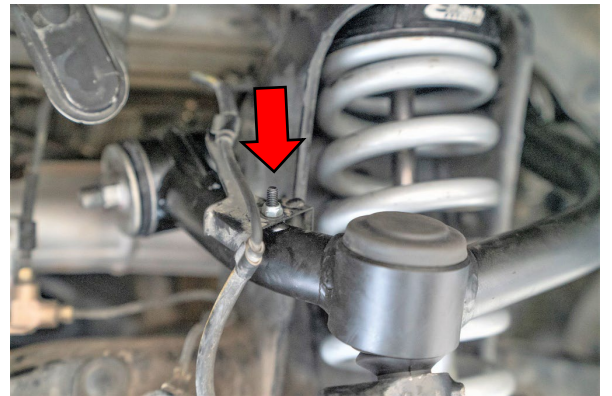
Step 18

Step 18. Reconnect the end link to the spindle.



Step 19

Step 19. Secure the end link and wheel speed sensor bracket with the OE hardware.



Step 20

Step 20. Secure the wheel speed sensor to the upper control arm with the OE hex nut.





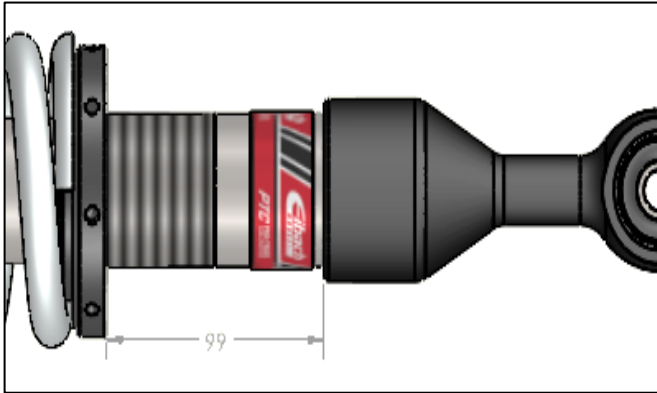
Step 21

Step 21. Secure the tie rod to the spindle with the OE castle nut and reinstall the OE cotter pin.



Step 22

Step 22. Double-check to make sure everything is properly tightened and positioned, then, reinstall the wheels and road test the vehicle.



Note: Do **NOT** go above a spring perch height of 99.5mm or else damage to shock and suspension will occur.