

Installation Instructions

Eibach Inc .264 Mariah Circle Corona, CA 92879 USA Tech Support 800-507-2338 ext. 114



PRO LIFT BLOCK #LB81-23-006-02-02

Kit Contents

Description	Part Number	Quantity
Lift Block	LB81-23-006-02-RA	2
U-Bolts	H20077485	4
Hex Nut, High	H66027400	8
Washer, Flat	H48027400	8

Notes

Read all instructions before beginning installation

Only qualified mechanics experienced in the installation and removal of suspension components should perform this installation.

Use of a hoist and screw jack is highly recommended and will substantially reduce installation time.

Never work on or under a vehicle unless it is properly supported.

Installation



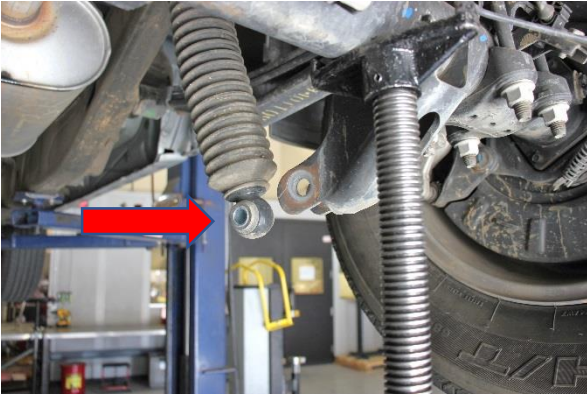
Step 1

Step 1. Support the rear axle with a screw or floor jack..

Step 2. Loosen and remove the lower shock mount hardware.

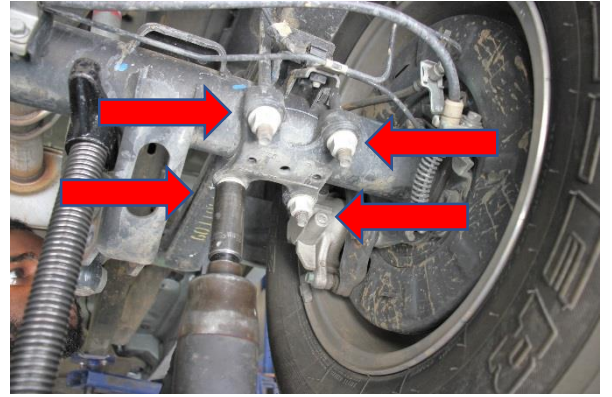


Step 2



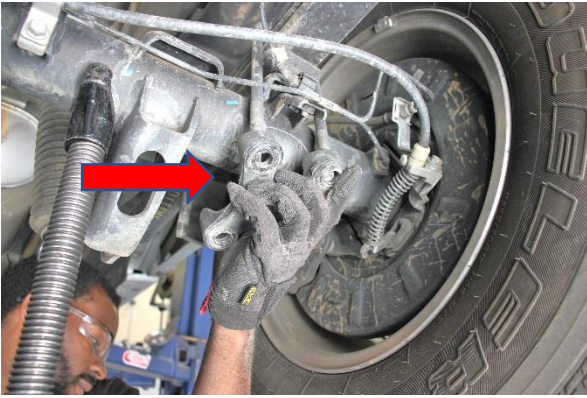
Step 3

Step 3. Separate the lower shock mount from the axle.



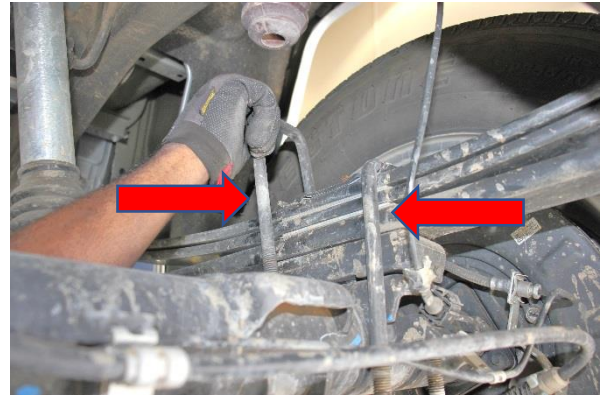
Step 4

Step 4. Loosen and remove the factory hex nuts that secure the OE U-Bolts and axle saddle.



Step 5

Step 5. Remove the OE axle saddle



Step 6

Step 6. Remove the OE U-bolts



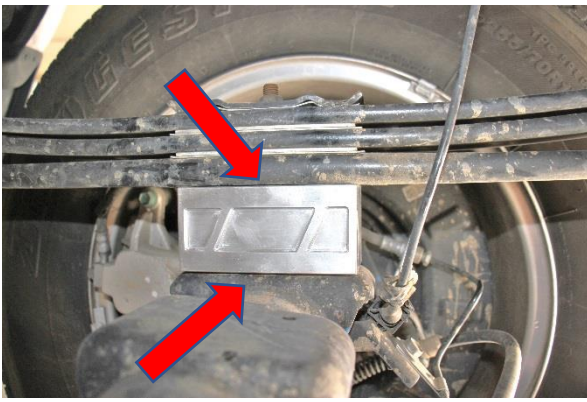
Step 7

Step 7. Lower the axle downwards and remove the OE block.



Step 8

Step 8. Install the new Eibach Lift Block, making sure the pins on the leaf spring and block are properly aligned with the receivers on the lift block and axle.



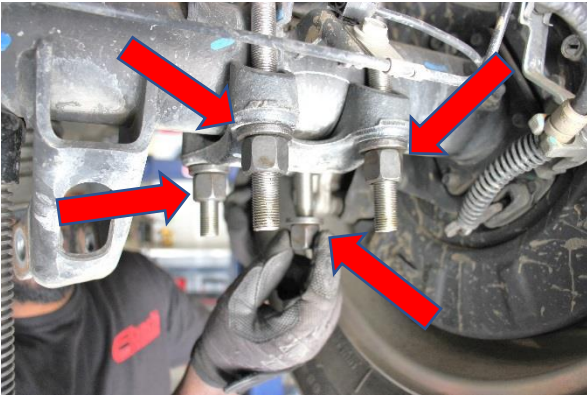
Step 9

Step 9. Raise the axle upwards and make sure everything is properly aligned.



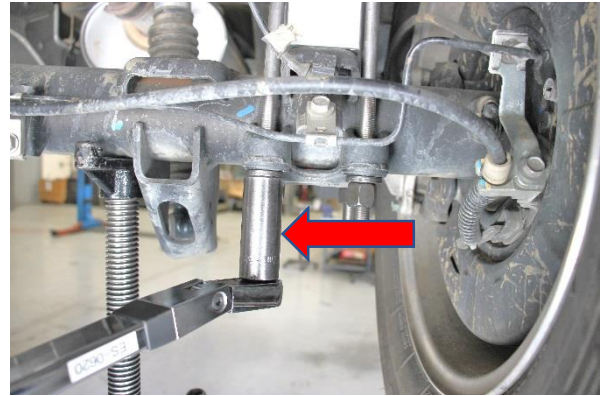
Step 10

Step 10. Install the provided Eibach U-Bolts.



Step 11

Step 11. Install the OE axle saddle and loosely hand Install the provided washers and hex nuts making sure there is equal thread engagement on the U-Bolts.



Step 12

Step 12. You can now use a torque wrench to fully tighten the hex nuts to 100 ft-lbs using a cross pattern to make sure they are properly tightened. **Note: Tightening the hex nuts in a cross pattern is necessary to ensure proper engagement. Failure to do so can cause a major suspension failure and could result in an accident or worse.**



Step 13

Step 13. Re-attach the shock to the axle using the OE hardware.



Step 14

Step 14. Doublecheck to make sure everything is properly positioned and tightened, then, road test the vehicle and retighten if necessary. Eibach suggests after 500 miles of driving to re-torque the hex nuts as a safety precaution.