

Installation Instructions

Eibach Springs, Inc. • 264 Mariah Circle • Corona, California 92879-1751 • USA • Tech Support 800-222-8811 Ext 114



Anti-Roll-Kit # 7214.310 & 7215.310

Porsche – 996 C4 Turbo 9/97-2004

Kit Contents	Description	Part Number	Qty
	Front Bar	7214.320 VA	1
	Anti-Roll Hardware Kit	7214.310HK	1
	Information Kit	EPAK	1
	Instructions	7214.310INST	1

NOTES: **Read All Instructions Before Beginning Installation**

- Only qualified mechanics experienced in the installation and removal of suspension components should perform this installation.
- Use of a hoist and screw jack is highly recommended and will substantially reduce installation time.
- Never work on or under a vehicle unless it is properly supported by safety stands and wheels are blocked.
- Tire Rotation: In order to increase the life of your tires, it is recommended to rotate your tires every 3,000 miles.

Additional Eibach Components Available For Your Car

Eibach Kits	Part Number	Description	Front	Rear
<i>Pro Kit</i>	7214.140	Performance Lowering	1.0"	1.0"
<i>Pro Street</i>	7215.710	C4 AWD Turbo <i>Coil Over</i>	1.2 - 2.5"	0.8 - 2.0"



FACTORY FRONT BAR REMOVAL

1. With the car safely supported on a hoist or safety stands, remove all four wheels
2. Located under the front of the car is a plastic splash shield that must be removed for access. Remove the shield by popping the six rectangular clips off, and removing the four 10mm plastic nuts. Set shield and hardware aside for now. See Photo 1.

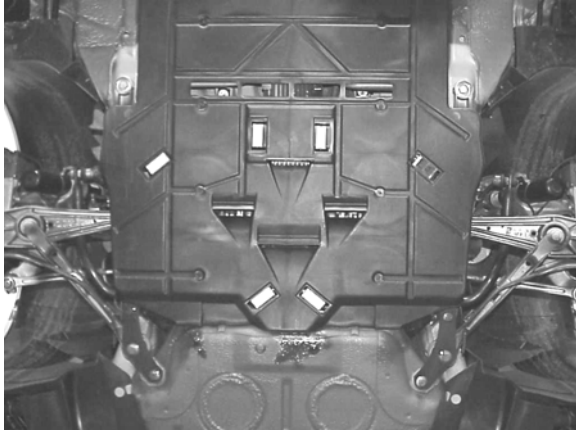


Photo 1



Photo 3

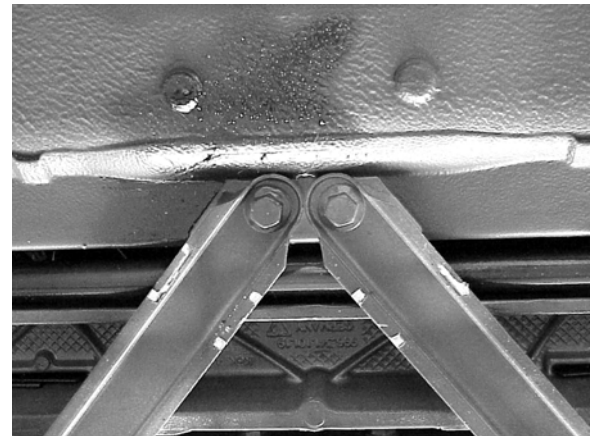


Photo 4

3. Locate the two braces that run from the sides of the sub frame to the front of the body, they are attached with four 16mm bolts. Remove all four bolts, and both braces, set aside for now. See Photos 2 - 4.
4. Remove the 16mm nut connecting the end link to the bar on each side of the car.
5. Locate the anti-roll bar bushing brackets, these brackets also secure the front of the lower control arms to the chassis. You must remove all three bolts, (two 16mm, one 18mm) use caution as the bar will now be completely disconnected from the car.

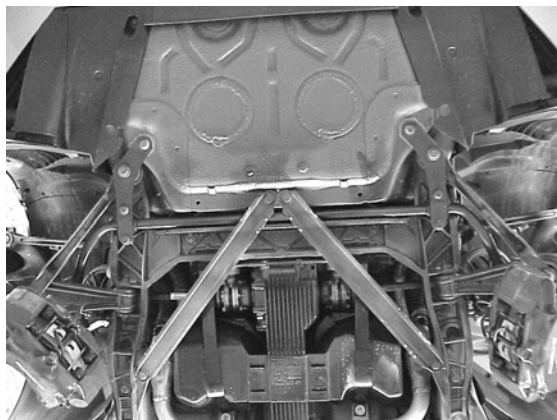


Photo 2

EIBACH FRONT BAR INSTALLATION

1. Using the original bar as a guide, install the new **EIBACH** bushings on the new bar after lubricating the inside with the supplied lubricant.
2. The new **EIBACH** front bar can now be installed in the car in the reverse order of the removal. You will notice that the **EIBACH** front bar is three position adjustable, we have provided a tuning guide at the end of the instructions, but suggest starting with the bar in the softest setting to get familiar with the cars handling before making any adjustments. See Photo 5.



Photo 5